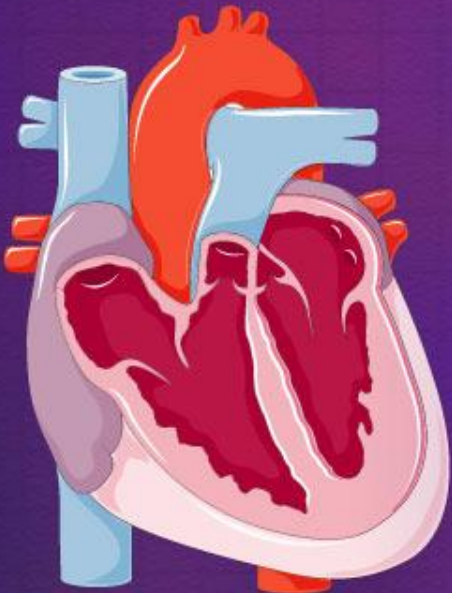
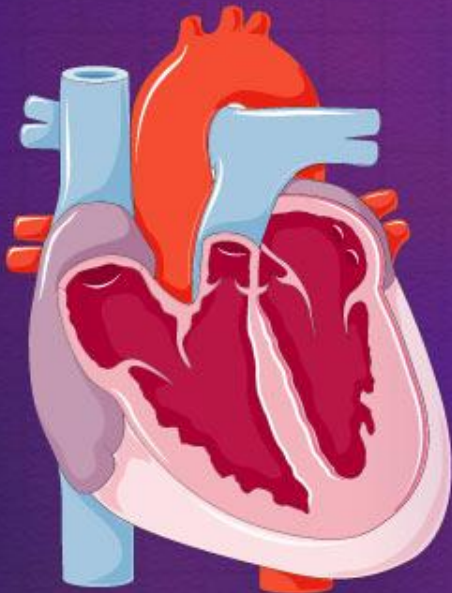
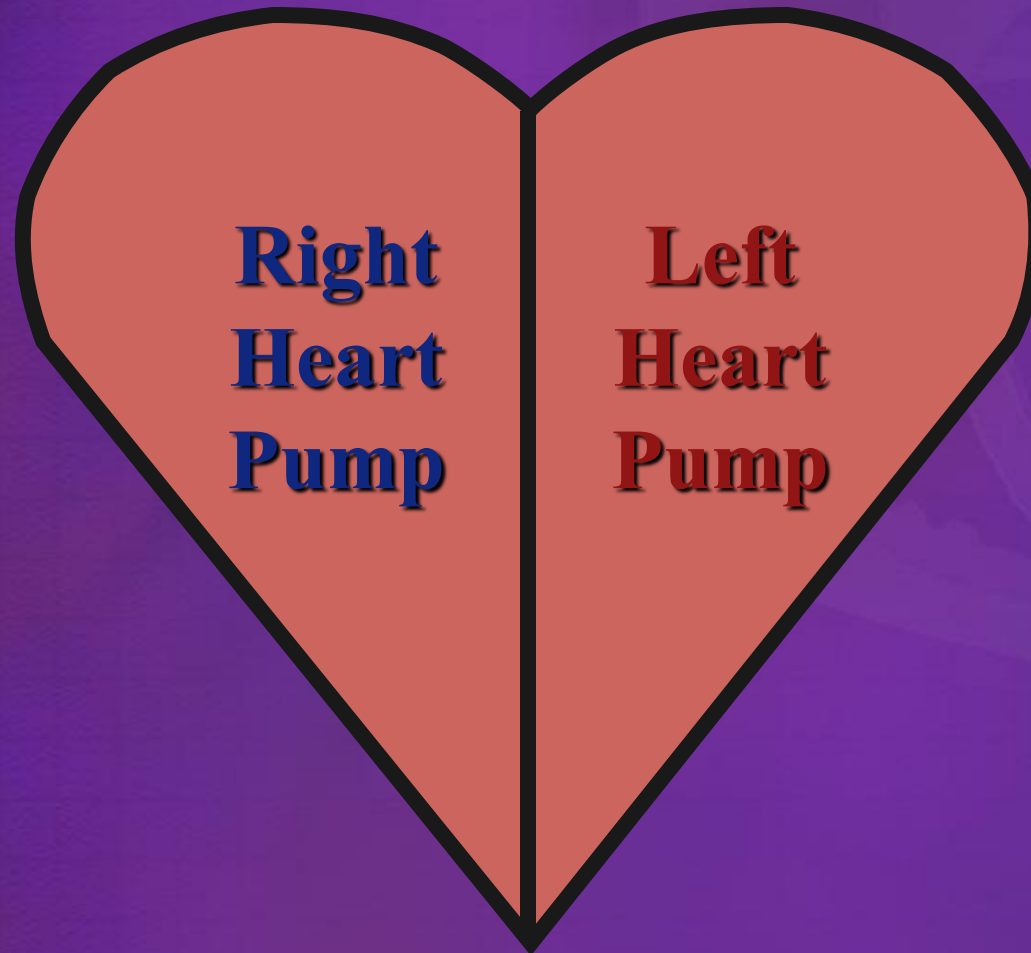


Supplies:

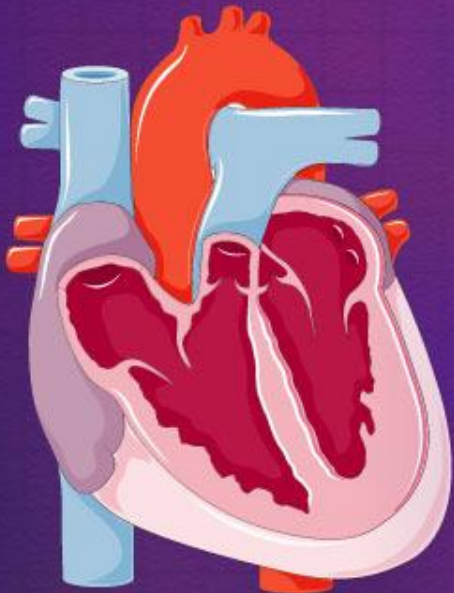
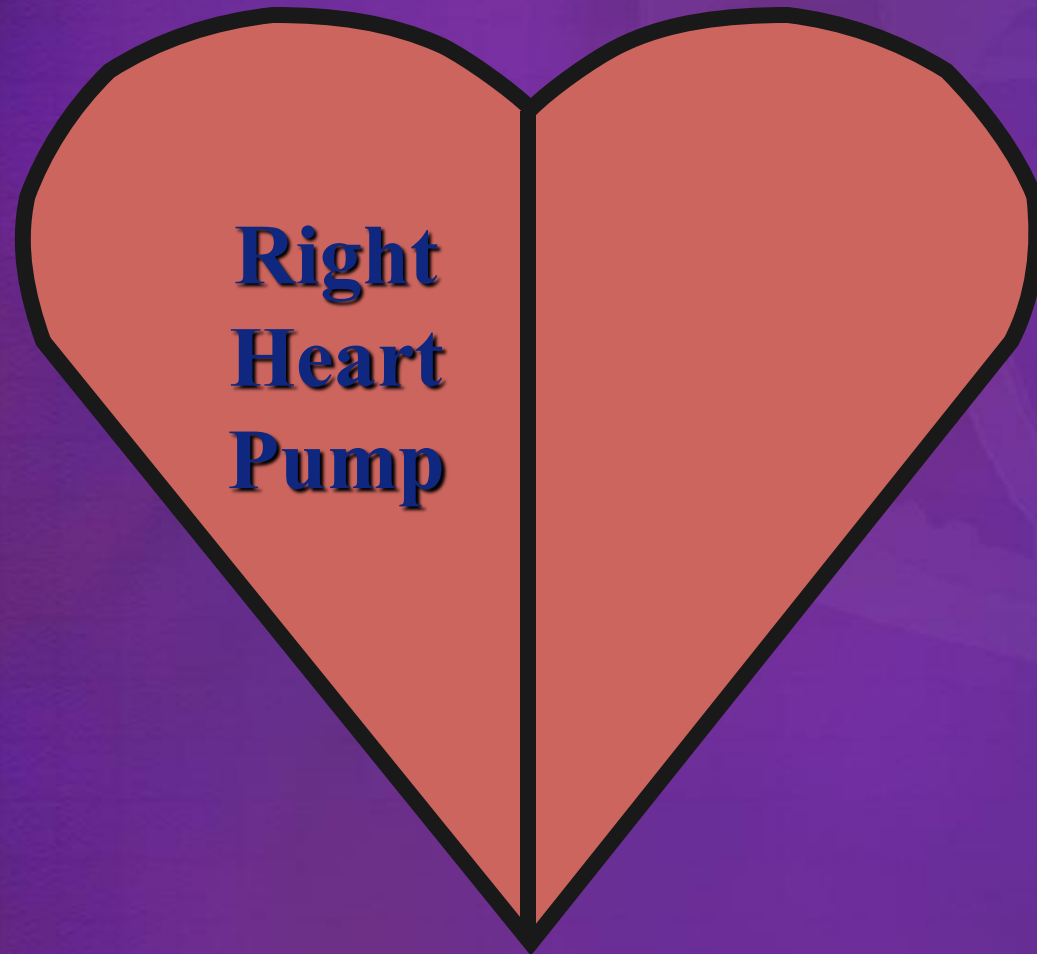
- 3 sheets paper
- Pencil
- 3 fine tip colored markers (blue, red, green)
- Optional: highlighter (pink or orange)



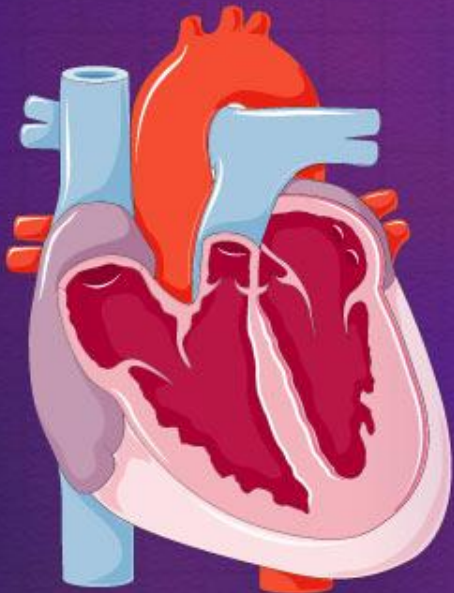
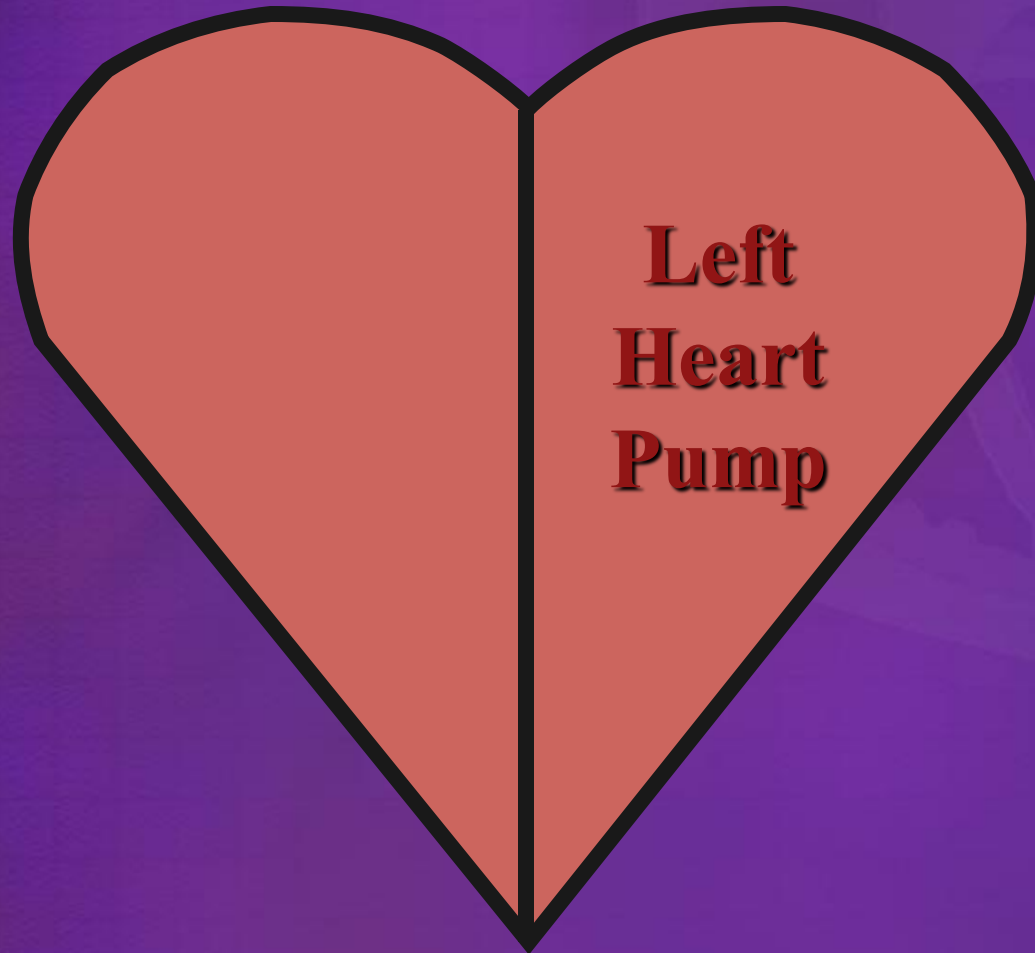
The heart is a double pump.



The right heart pumps venous (deoxygenated) blood.



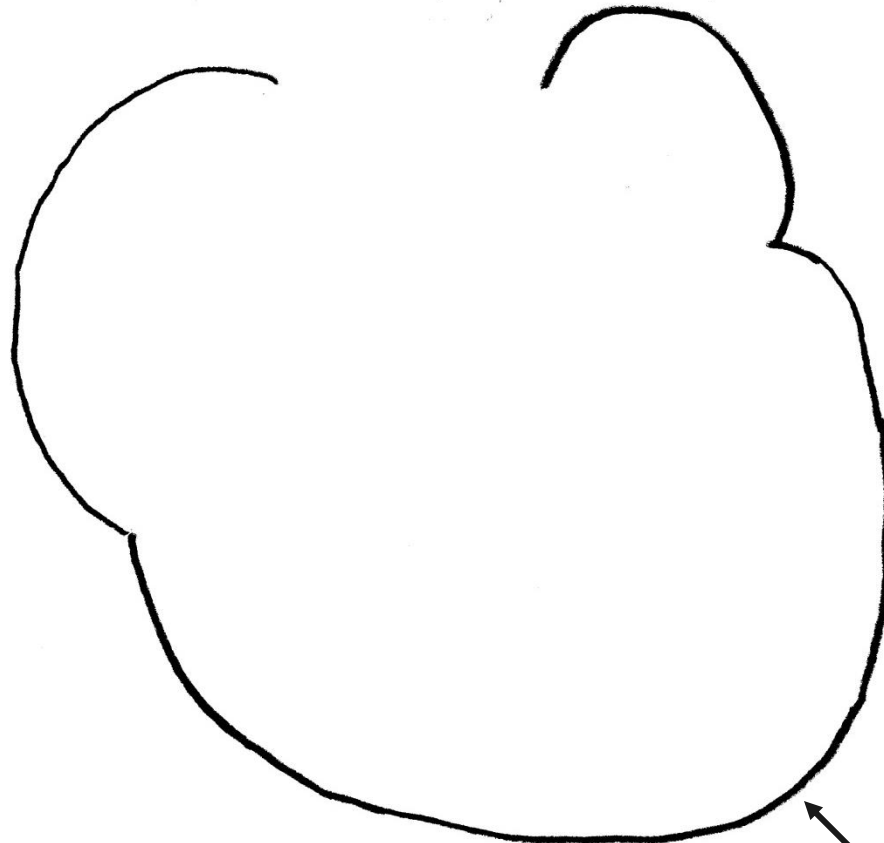
The left heart pumps arterial (oxygenated) blood.



Step 1: Draw outline of the right heart.

Rt. side

Lt. side



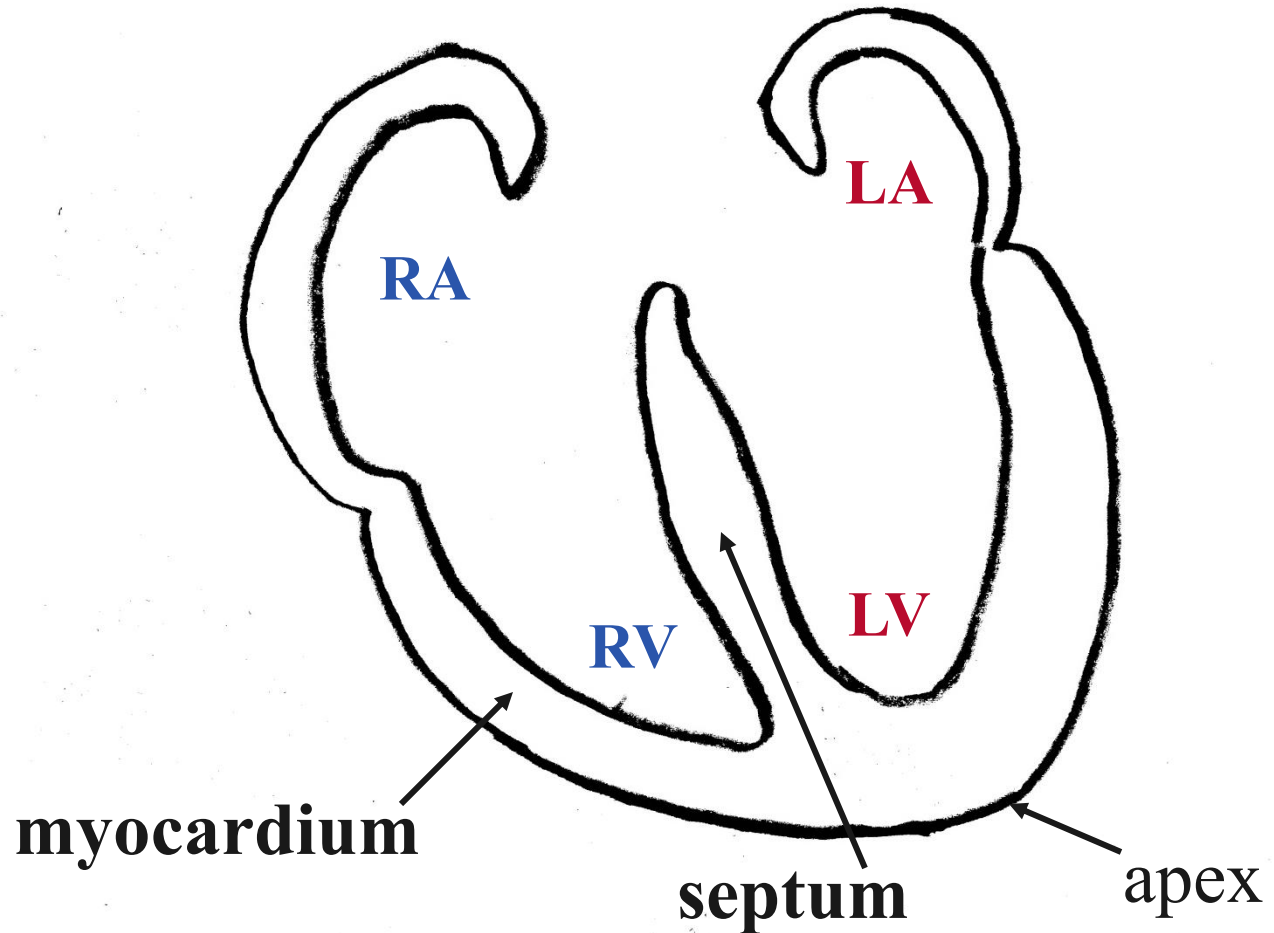
apex



Step 2: Draw myocardium & septum. Identify chambers.

Rt. side

Lt. side

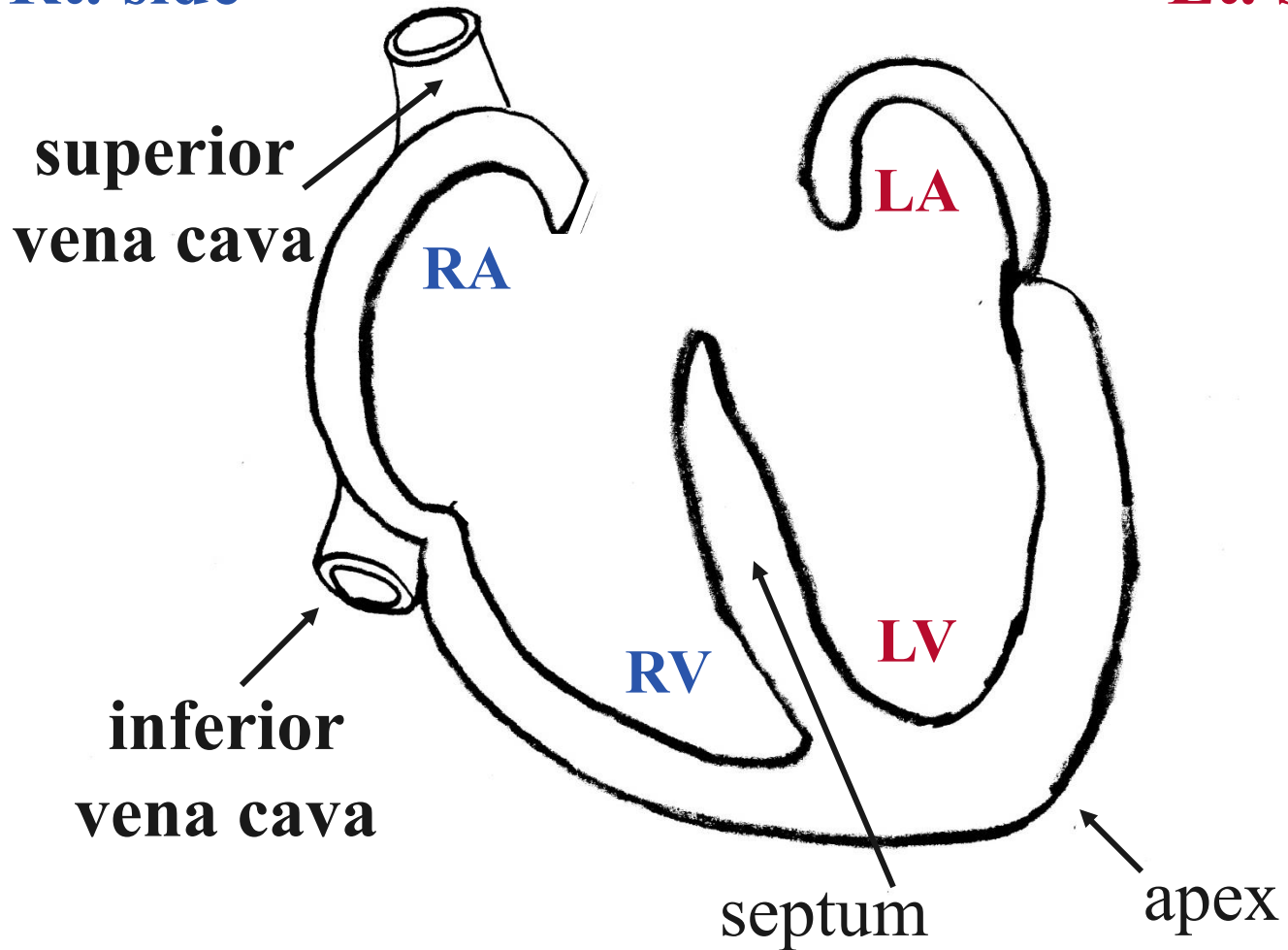


Step 3: Draw both superior & inferior vena cava.

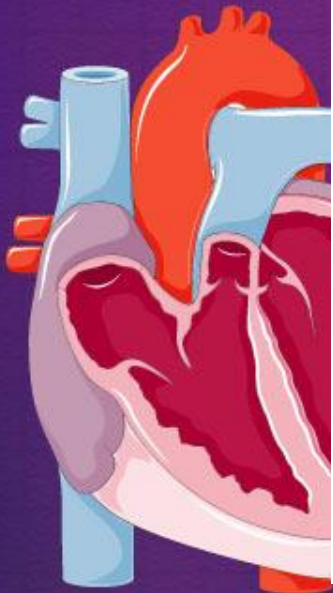
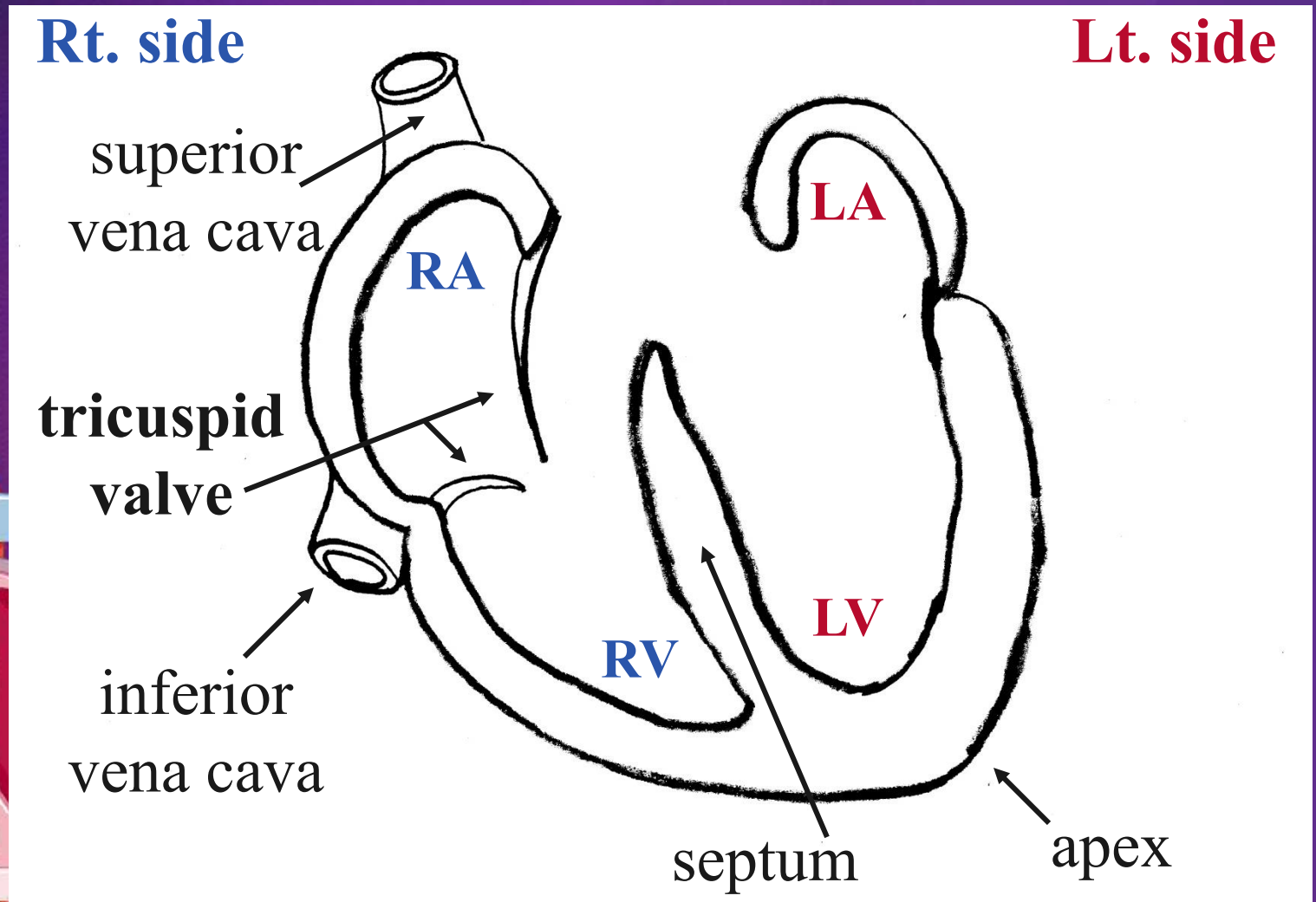


Rt. side

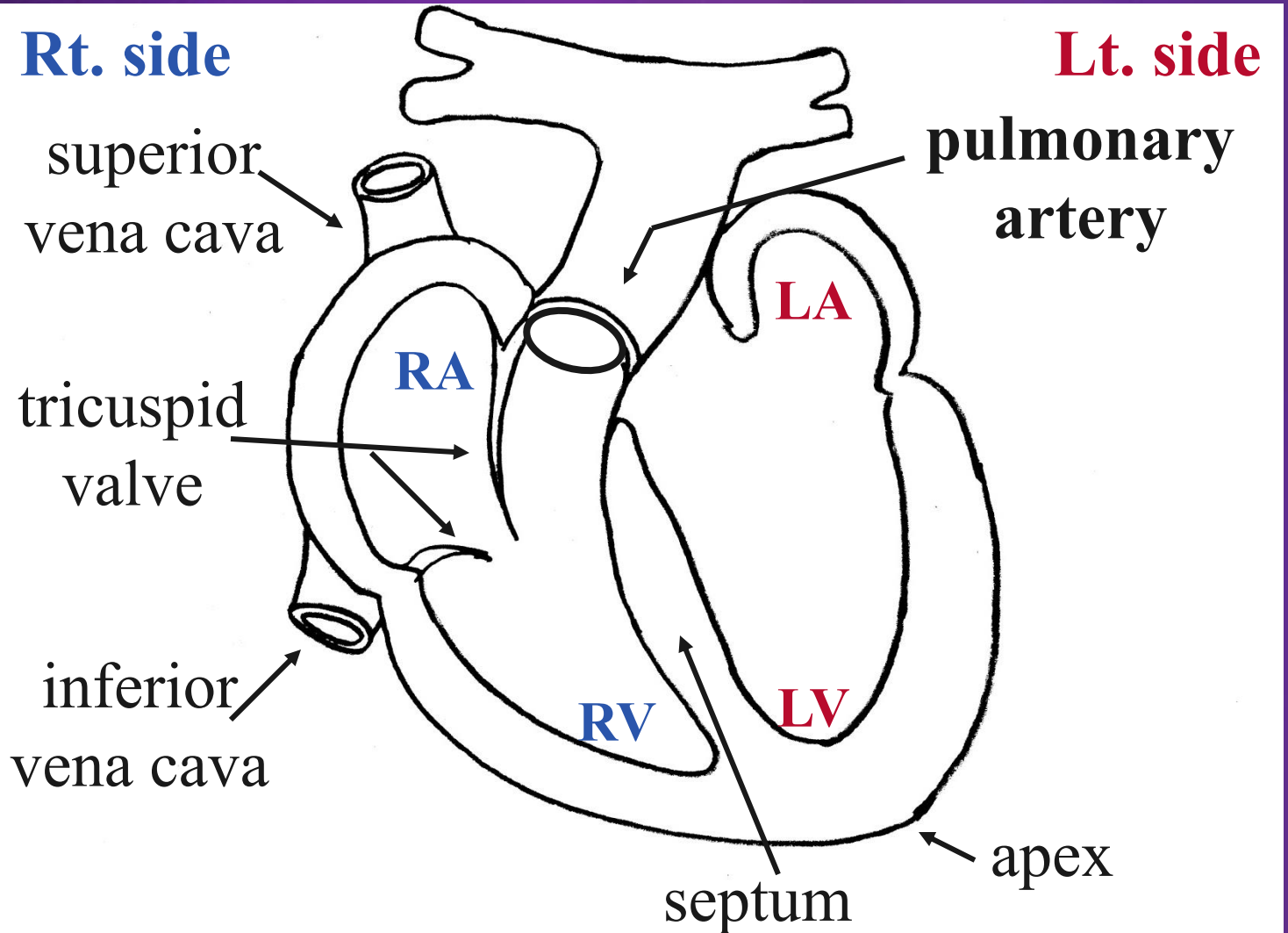
Lt. side



Step 4: Draw tricuspid valve.



Step 5: Draw pulmonary artery.



Step 6: Draw pulmonary valve.



Rt. side

Lt. side

superior
vena cava

tricuspid
valve

inferior
vena cava

RA

RV

LA

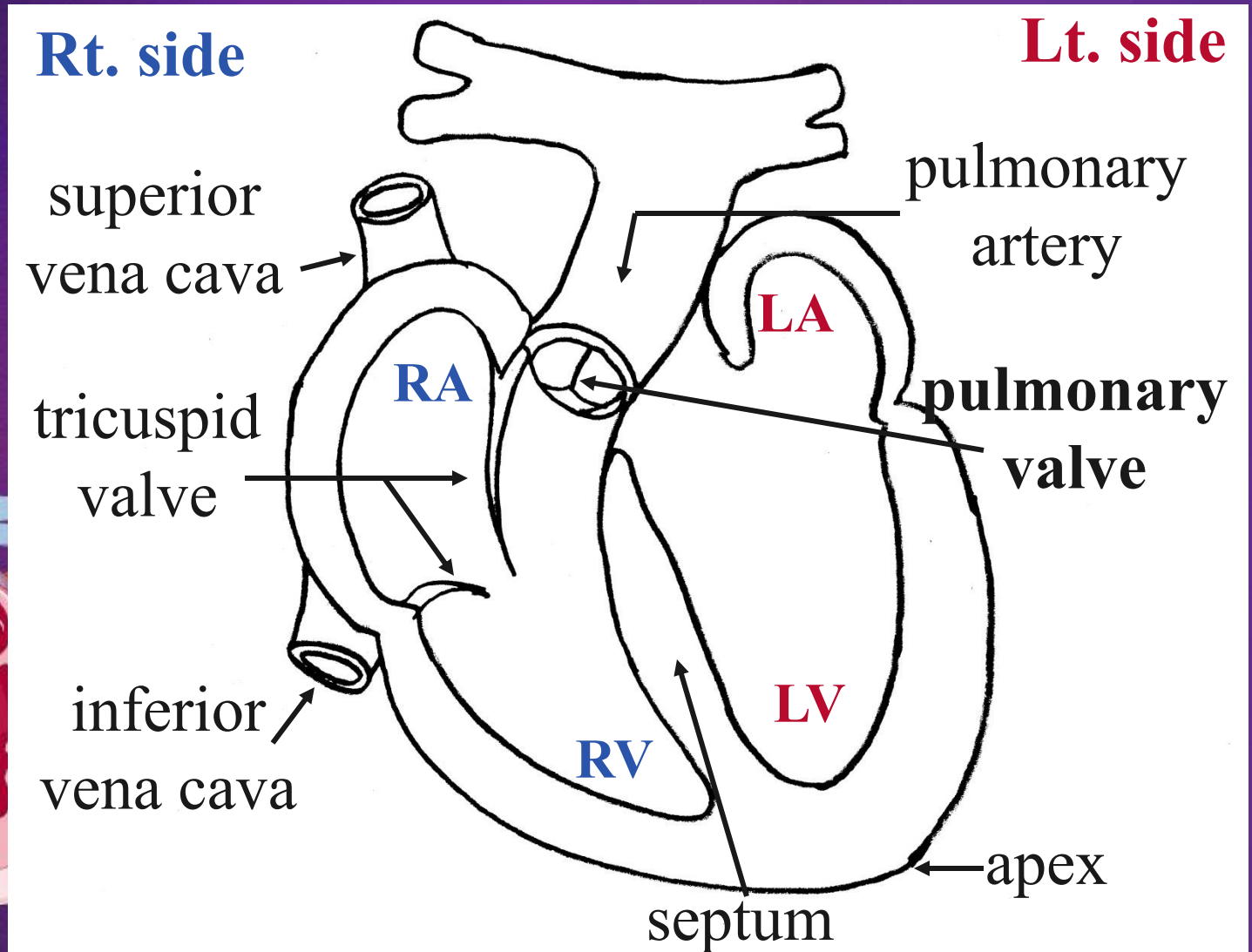
LV

pulmonary
artery

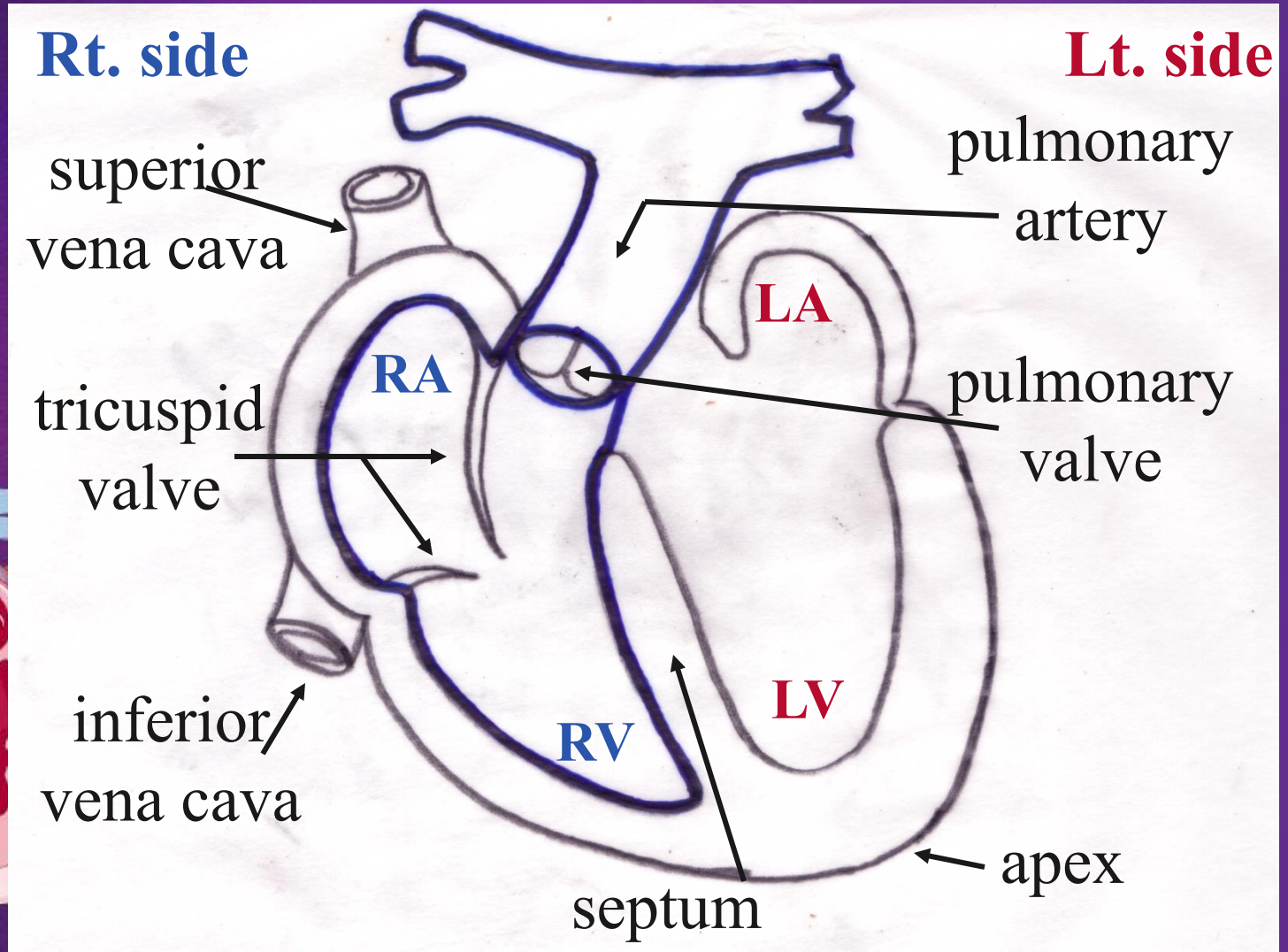
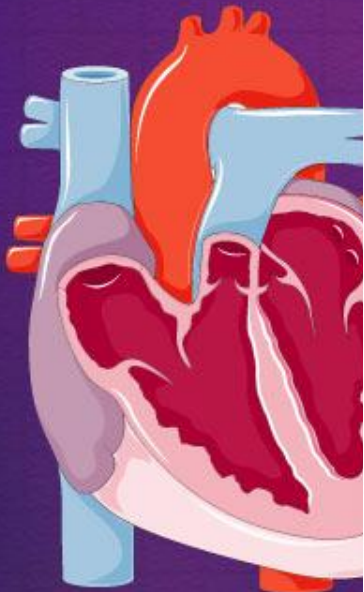
pulmonary
valve

septum

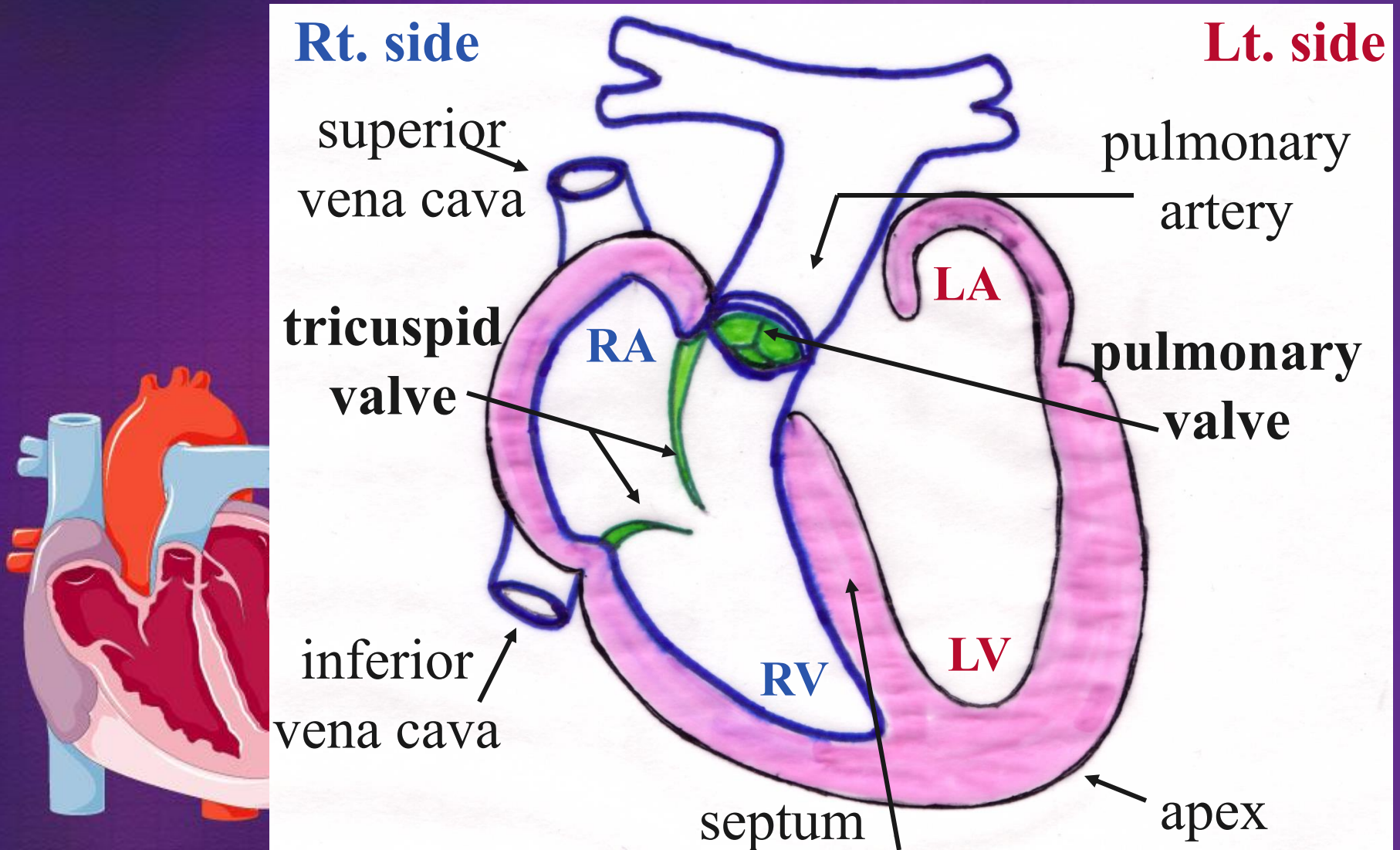
apex



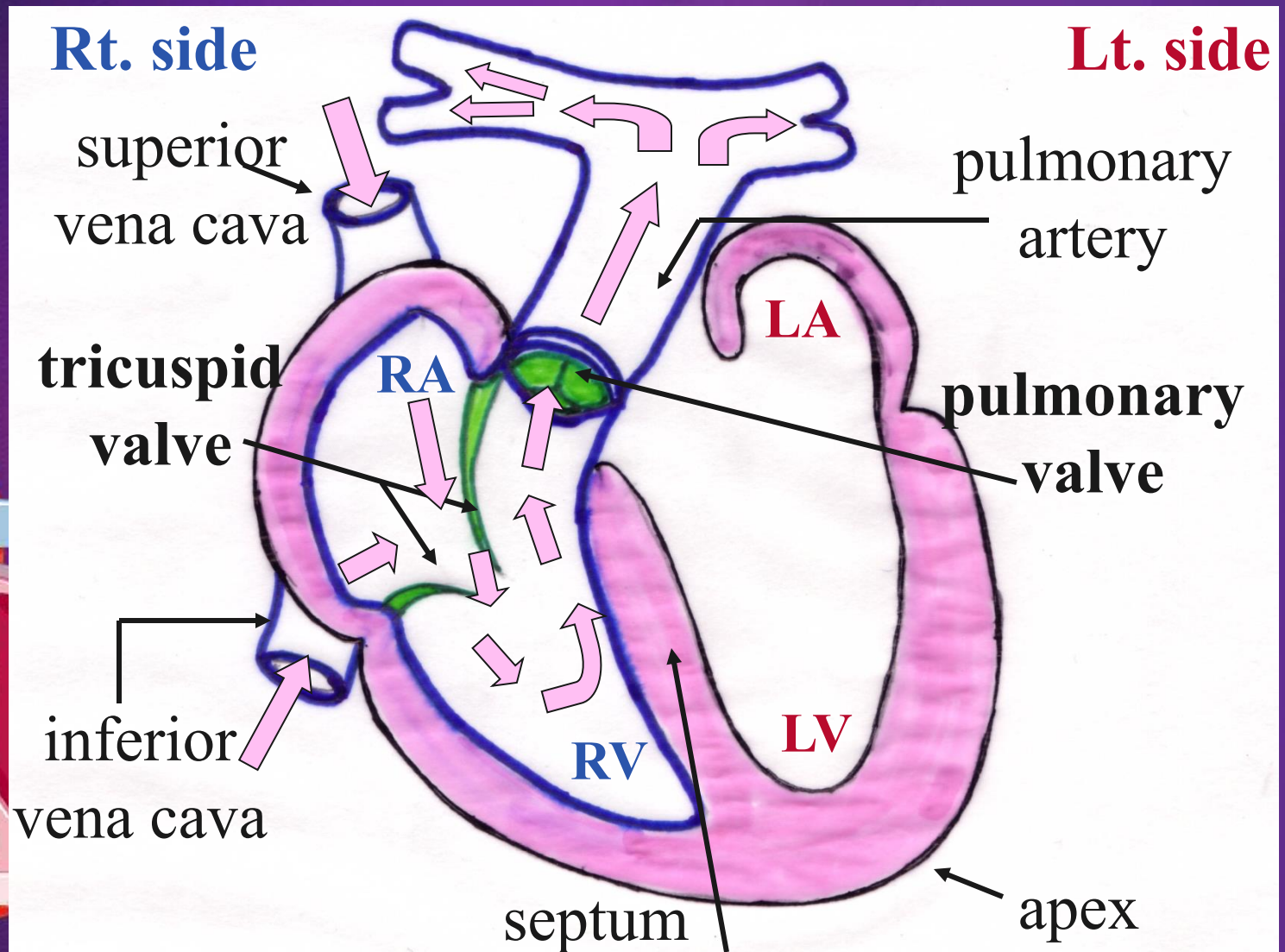
Step 7: Outline great vessels & chambers with blue marker.



Step 8: Outline valves in green. Color septum & myocardium in pink.



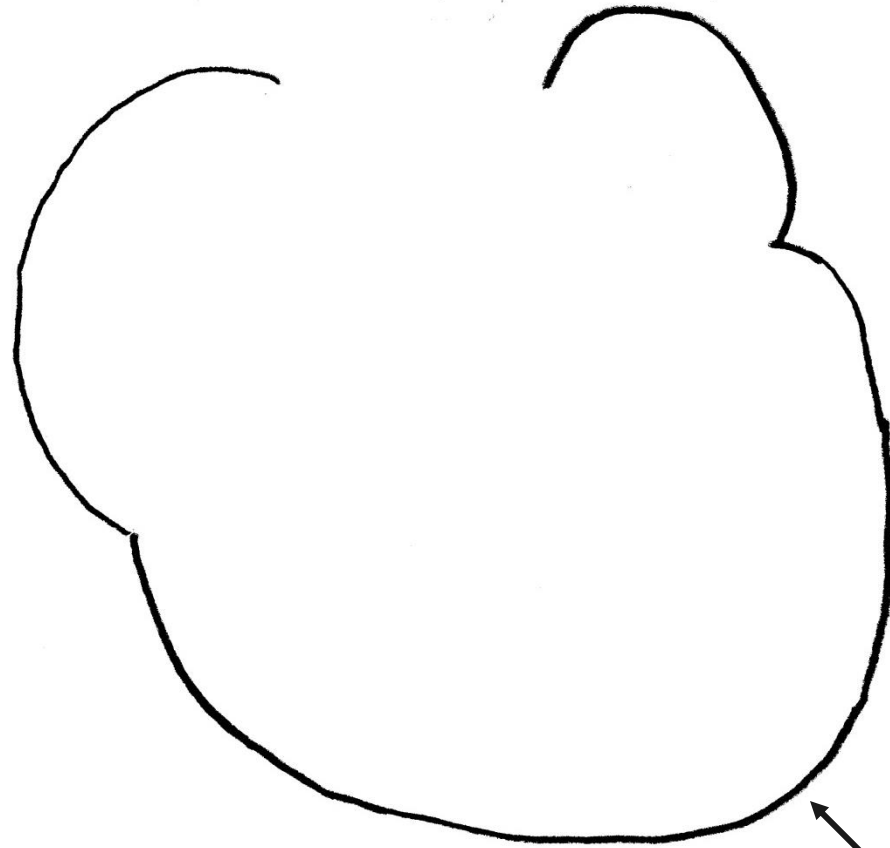
Step 9: Indicate pathway of blood through right heart with arrows.



Step 1: Draw outline of the left heart.

Rt. side

Lt. side



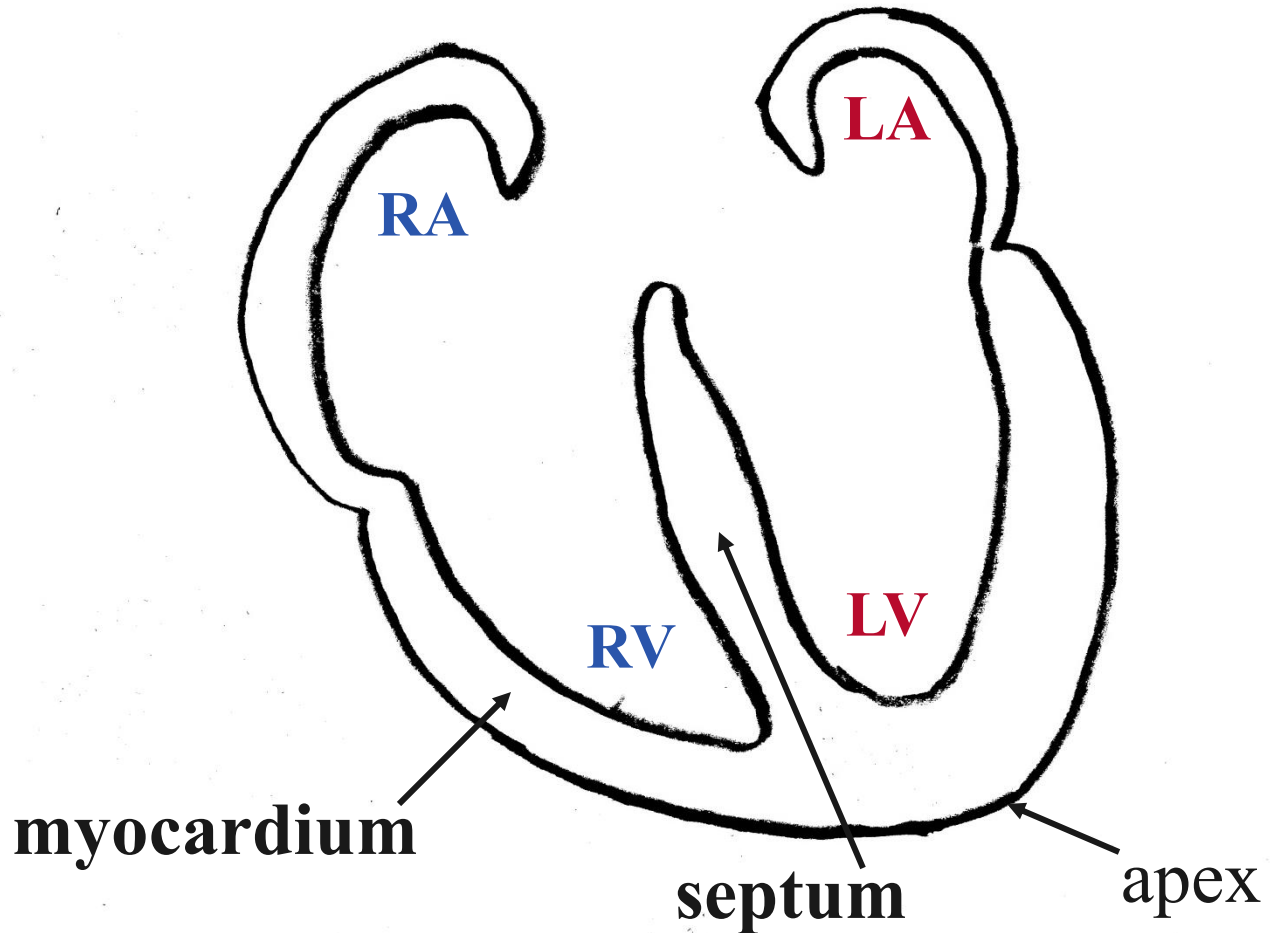
apex



Step 2: Draw the myocardium & septum.

Rt. side

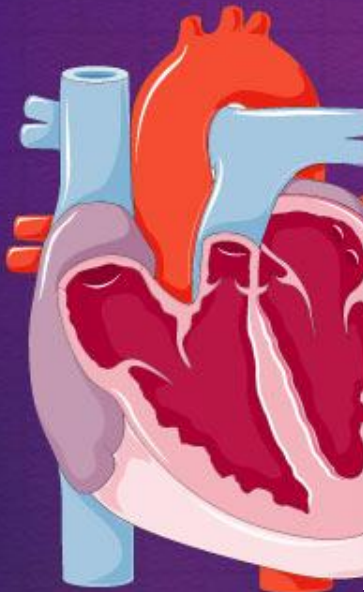
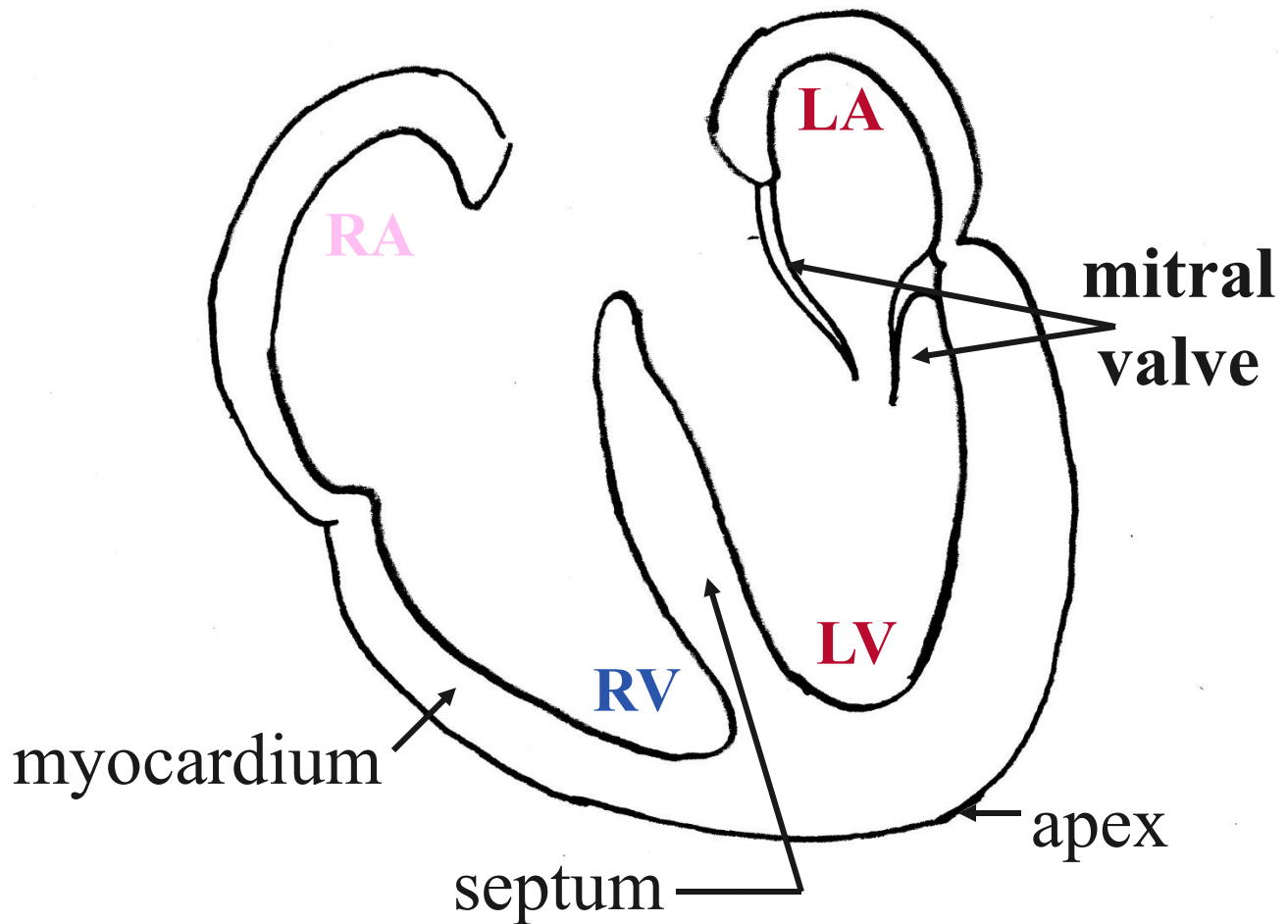
Lt. side



Step 3: Draw mitral valve.

Rt. side

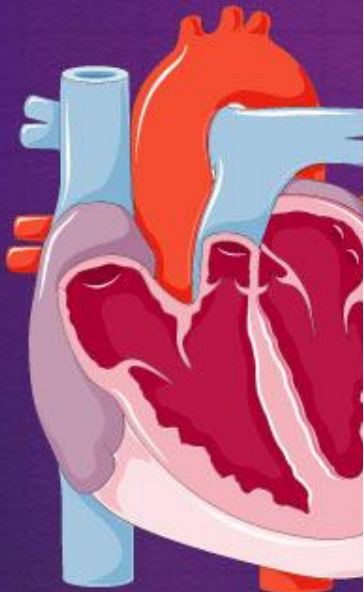
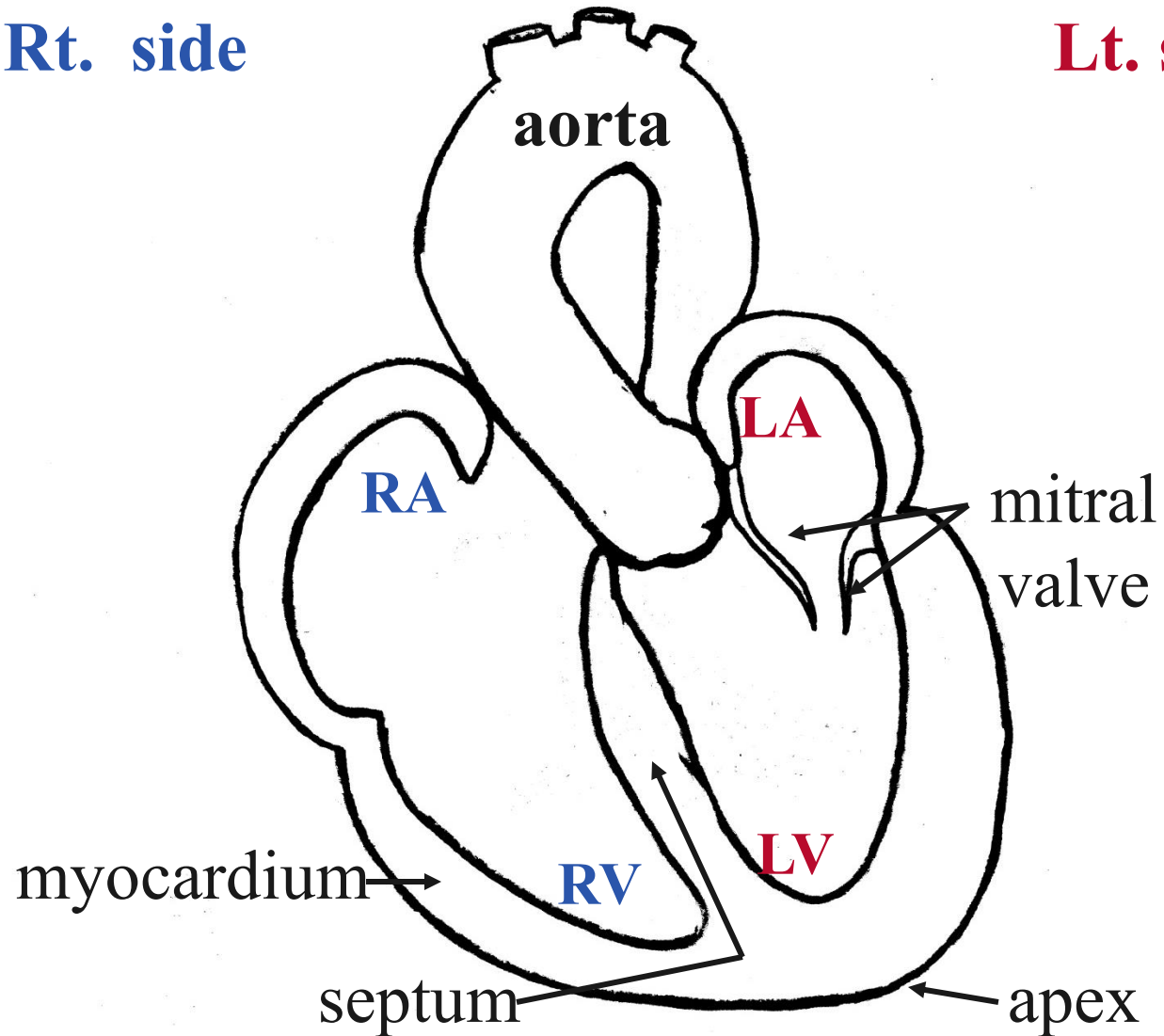
Lt. side



Step 4: Draw aorta.

Rt. side

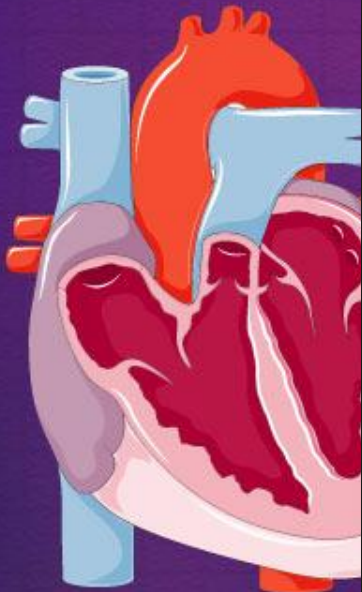
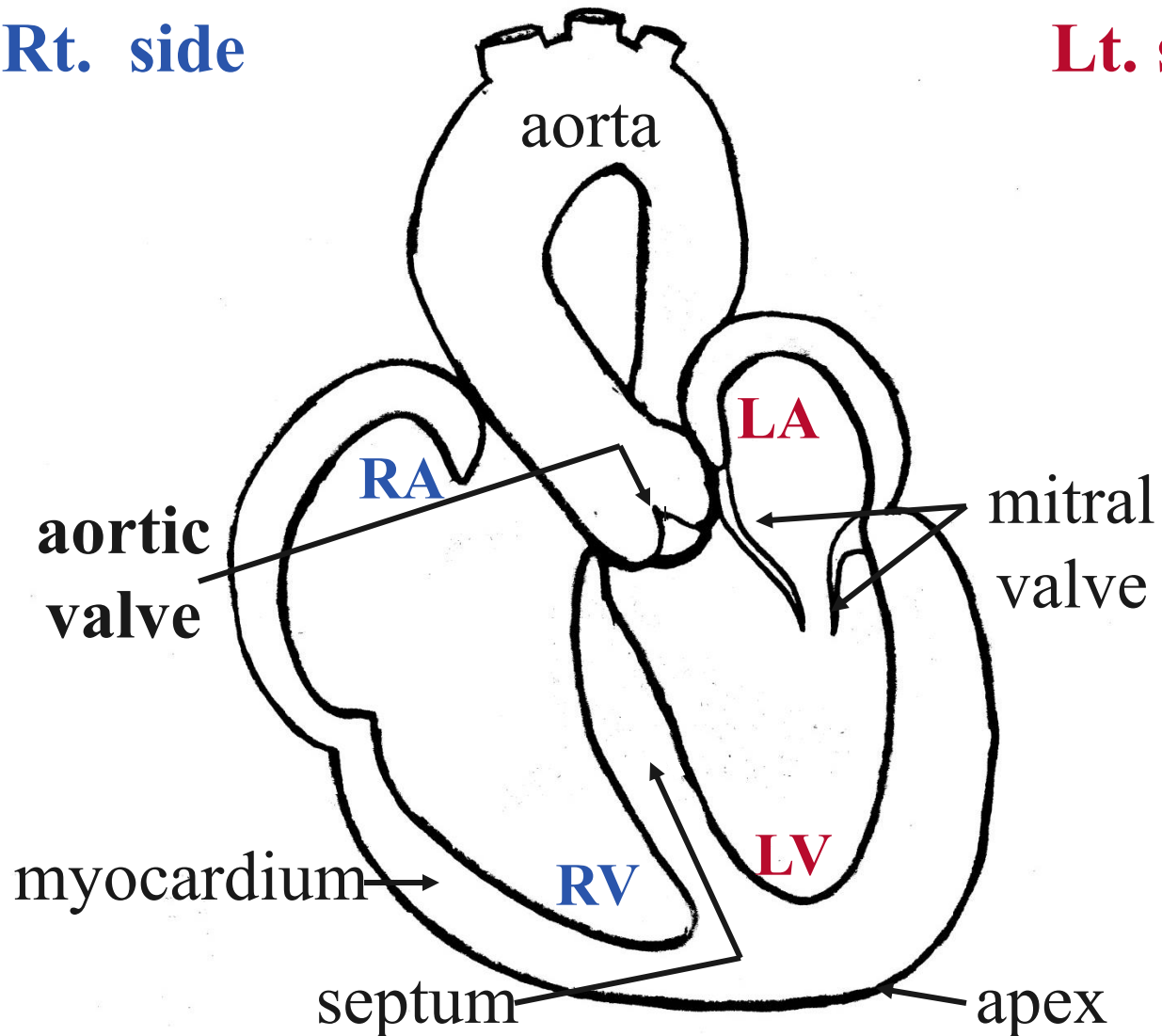
Lt. side



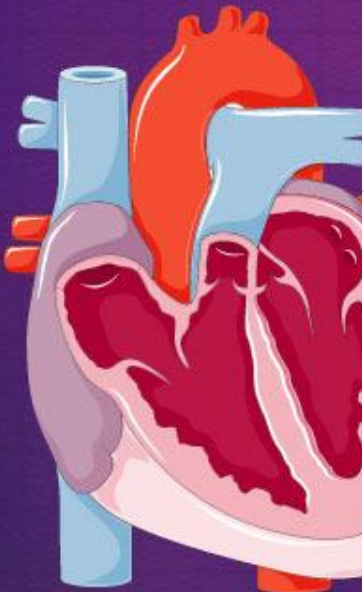
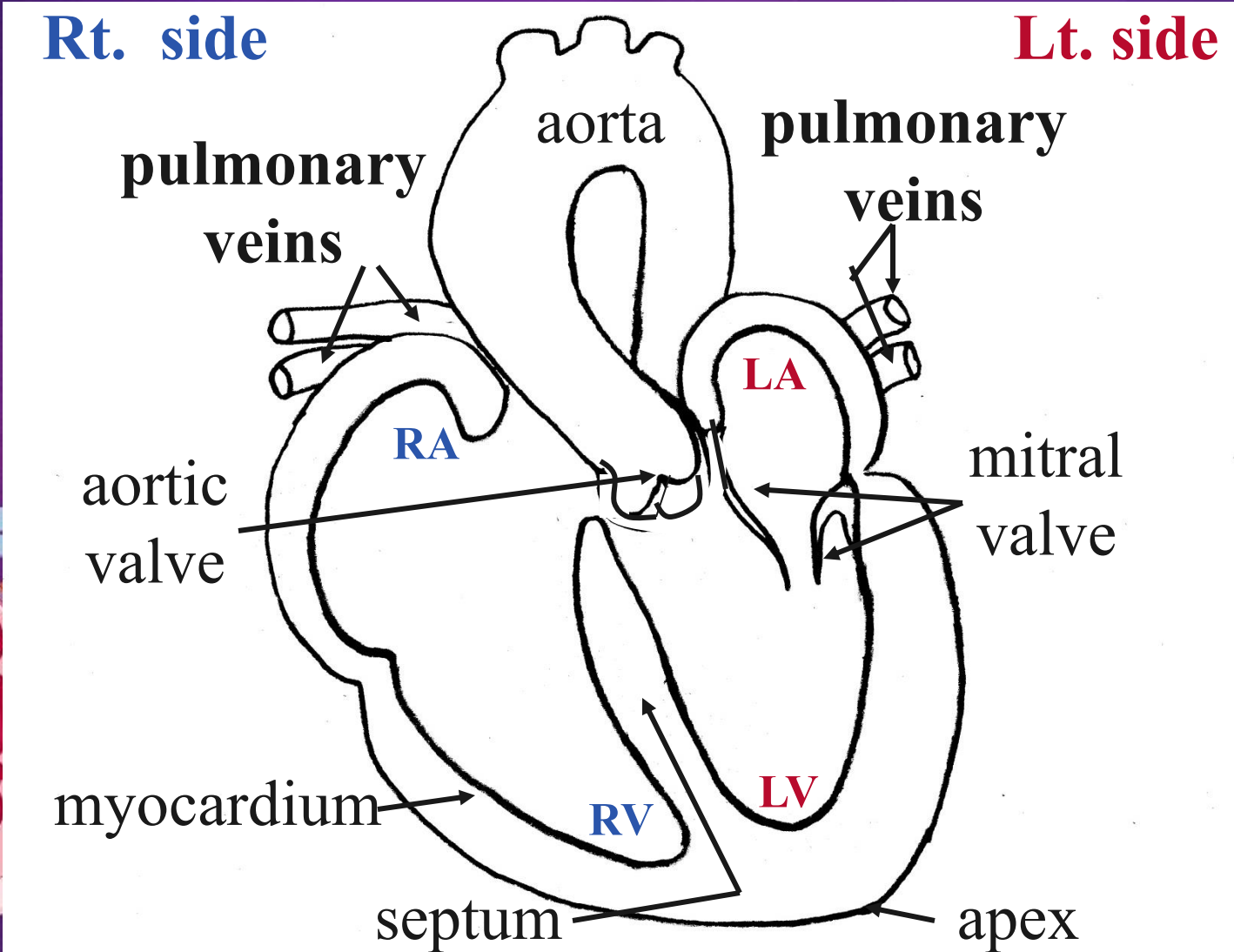
Step 5: Draw aortic valve.

Rt. side

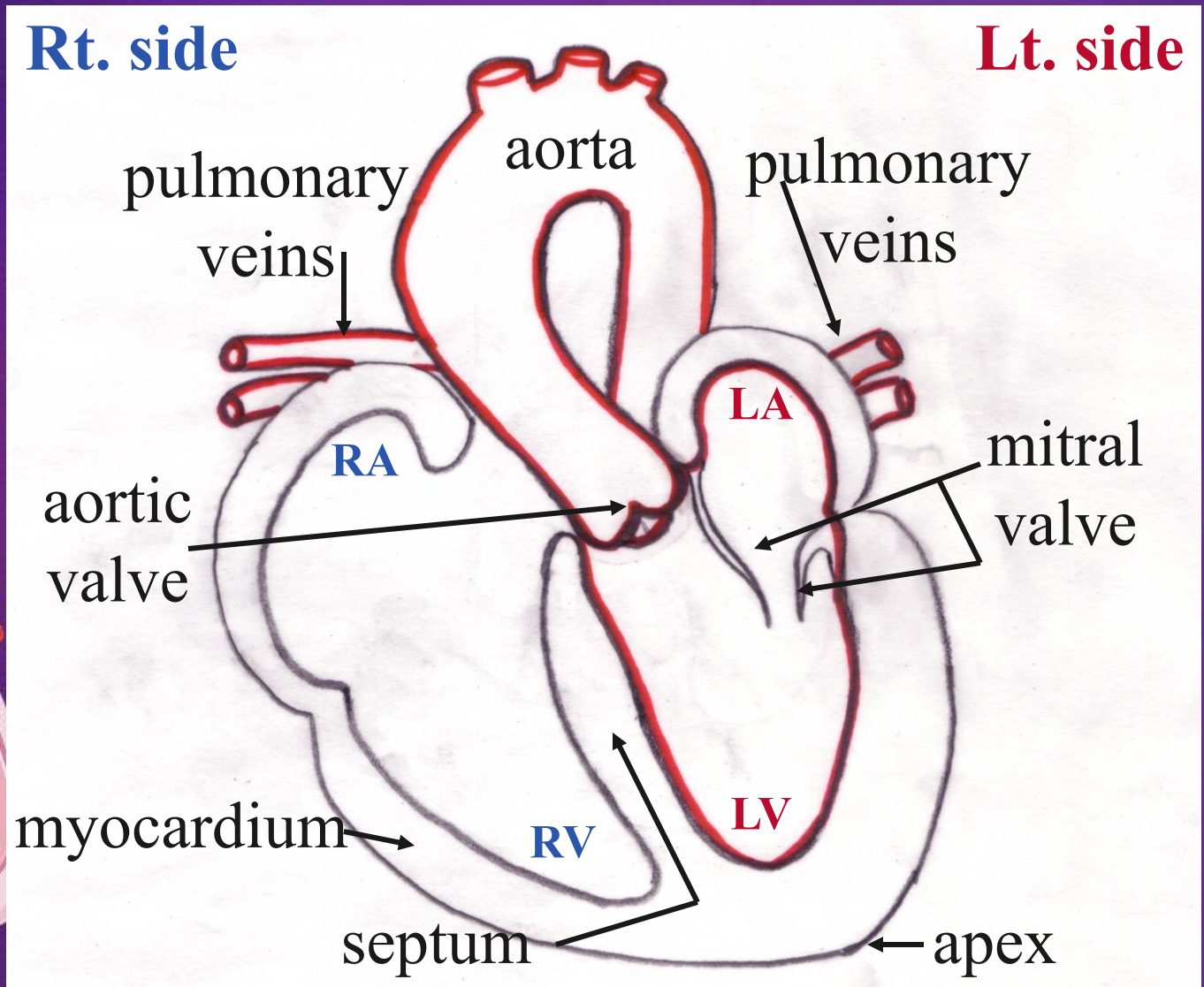
Lt. side



Step 6: Draw pulmonary veins.



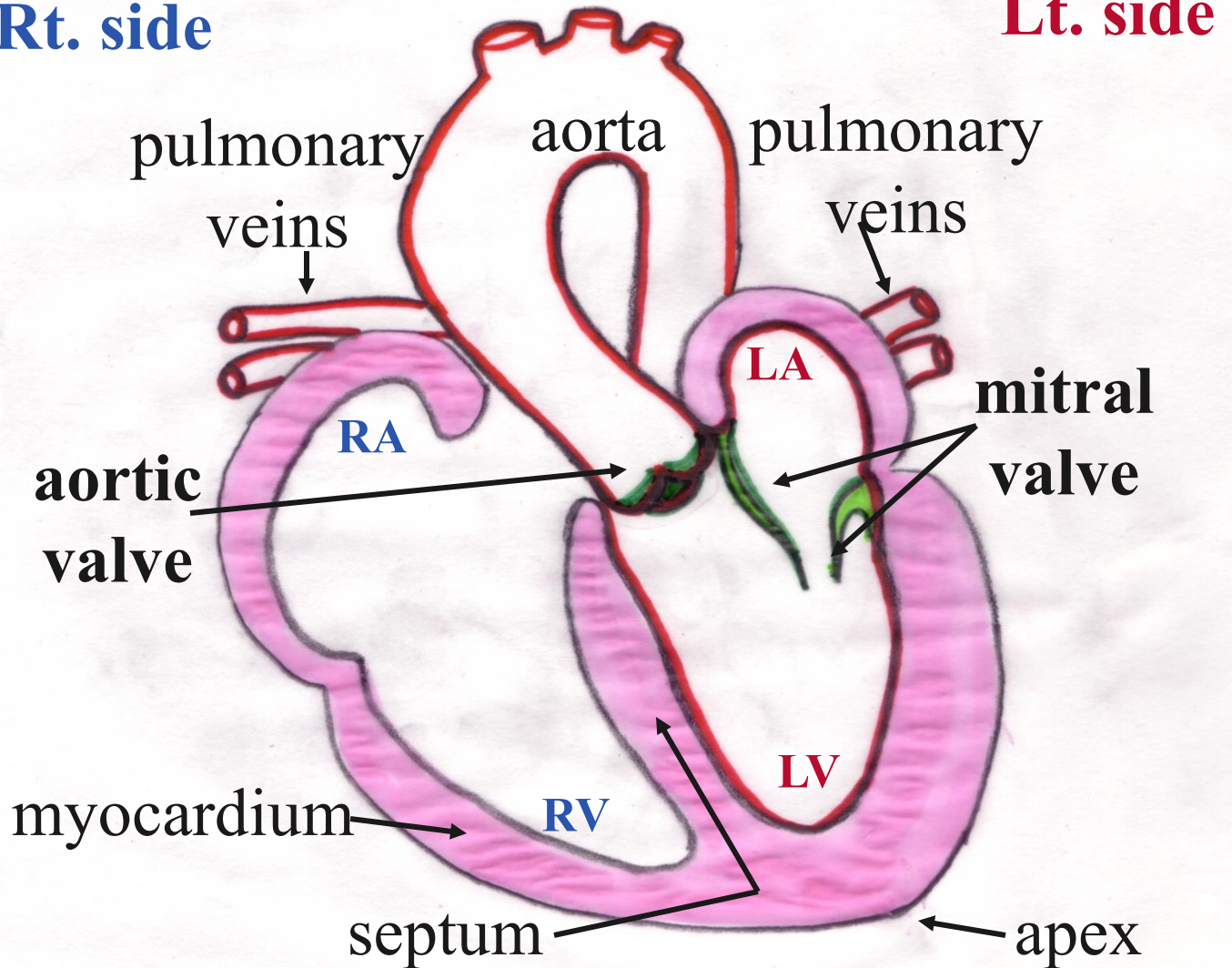
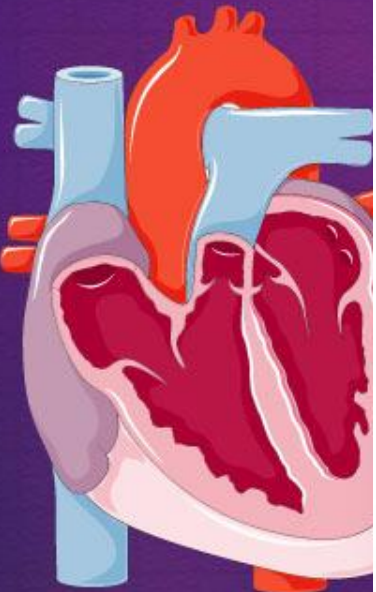
Step 7: Outline great vessels & chambers with red marker.



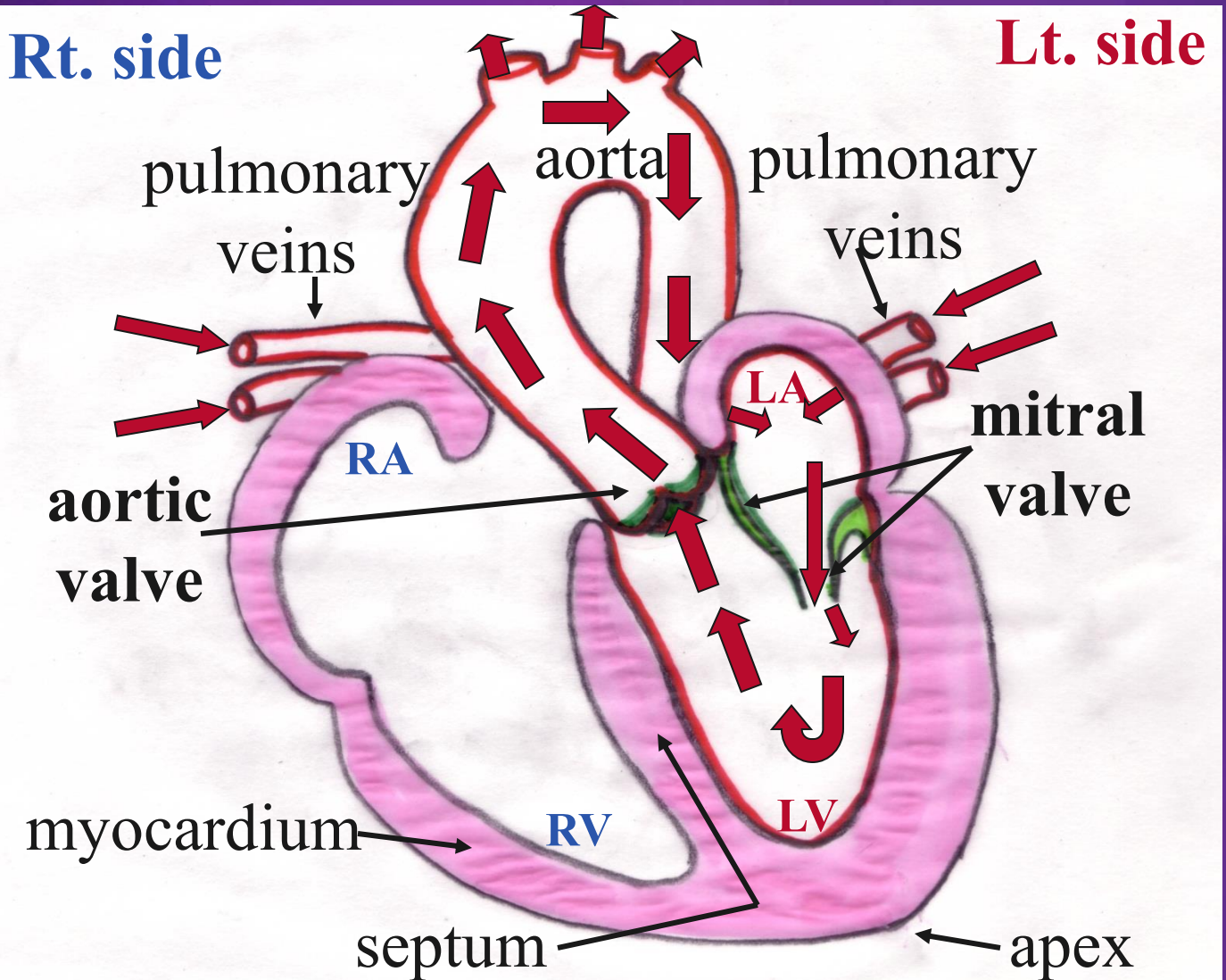
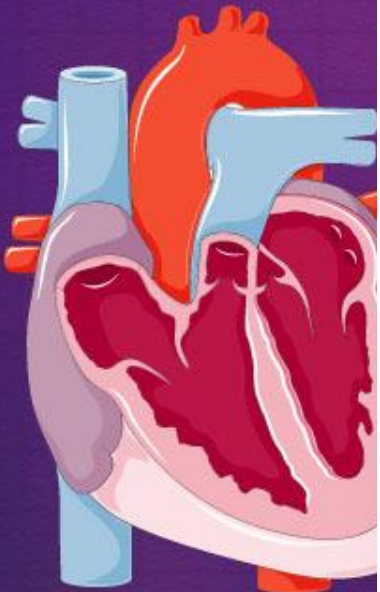
**Step 8: Outline valves in green.
Color septum & myocardium in pink.**

Rt. side

Lt. side



Step 9: Indicate pathway of blood through left heart with arrows.



Final Step: Draw entire heart.

