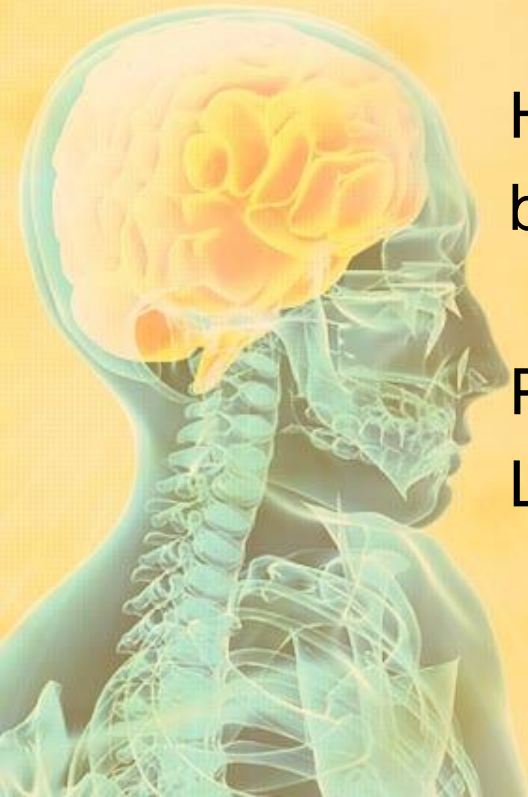


# Clay Anatomy of the Nervous System – Part 2 The Spinal Cord

Materials copyrighted and provided by  
Starla's Creative Teaching Tips ©

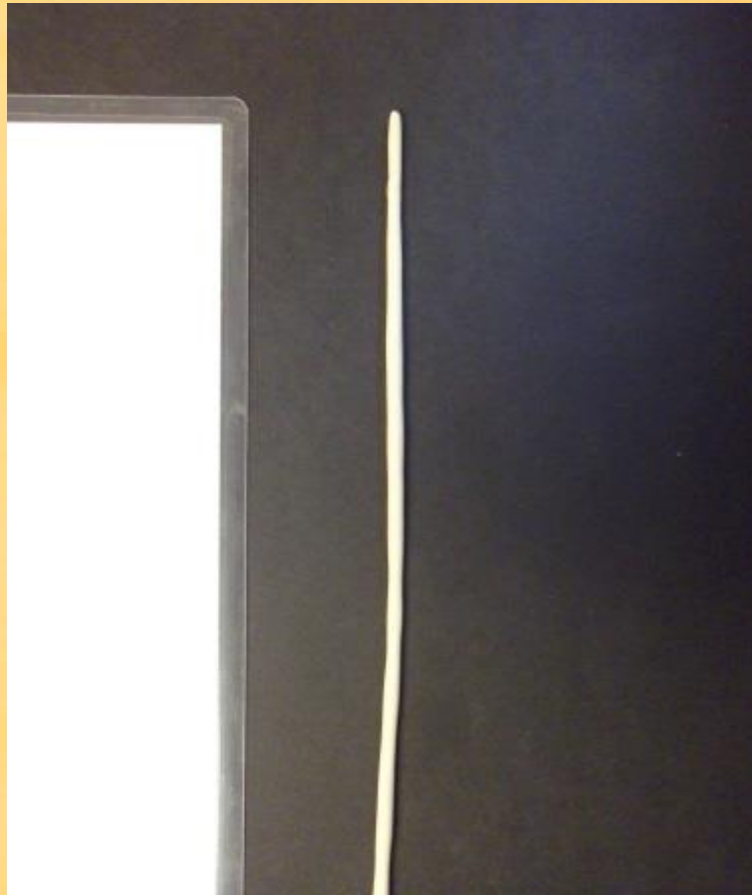
Hands-On Body Systems  
by Starla A. Ewan

Presentation arranged by  
Lydia Williams



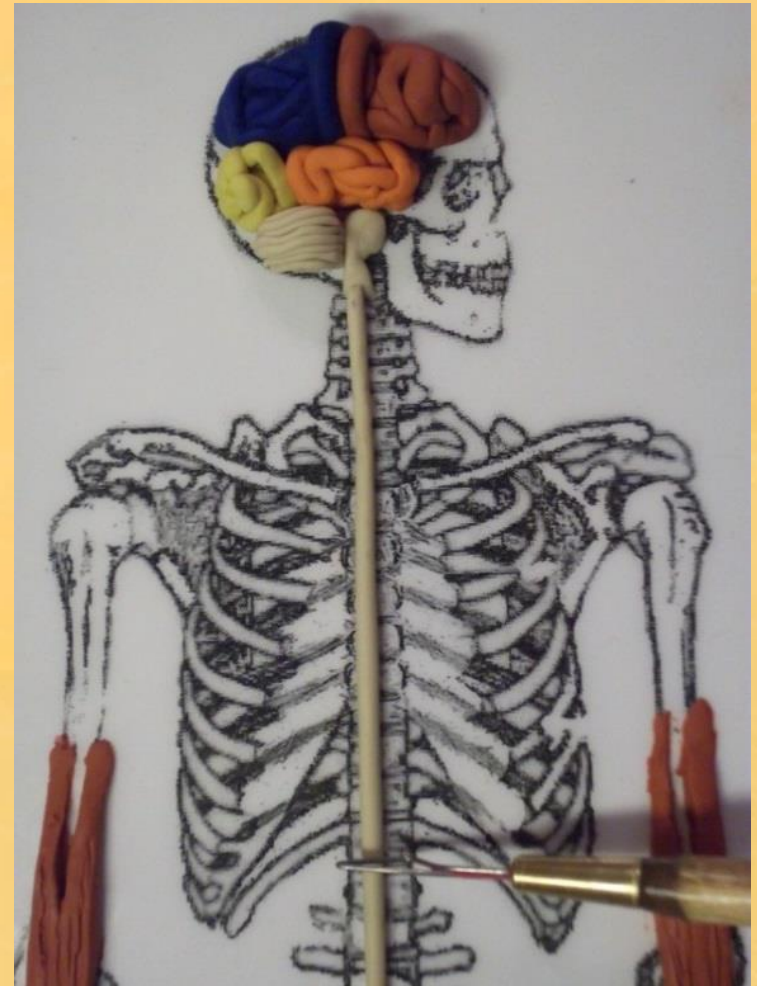
# Building the Nervous System – Part 2, Spinal Cord

- Form a thick strand of ivory clay about 4-5” long.

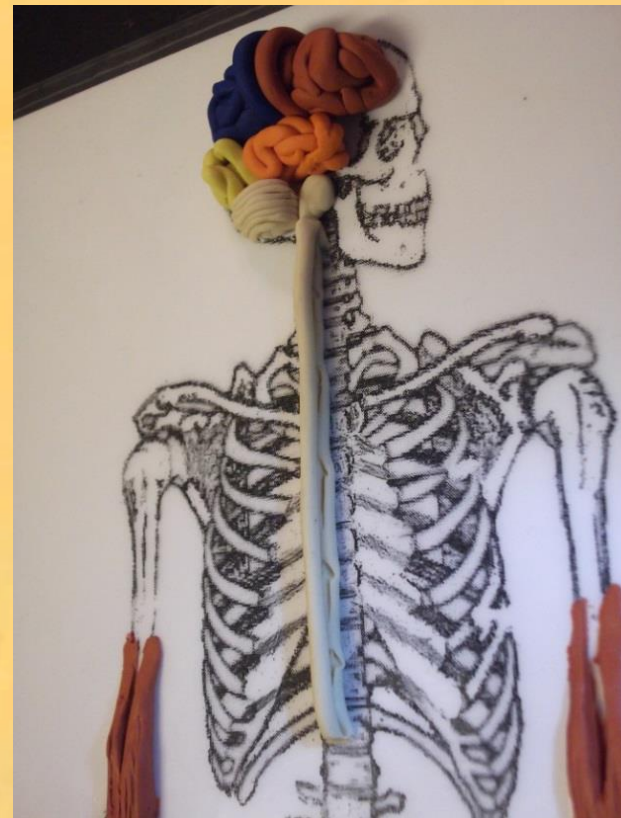
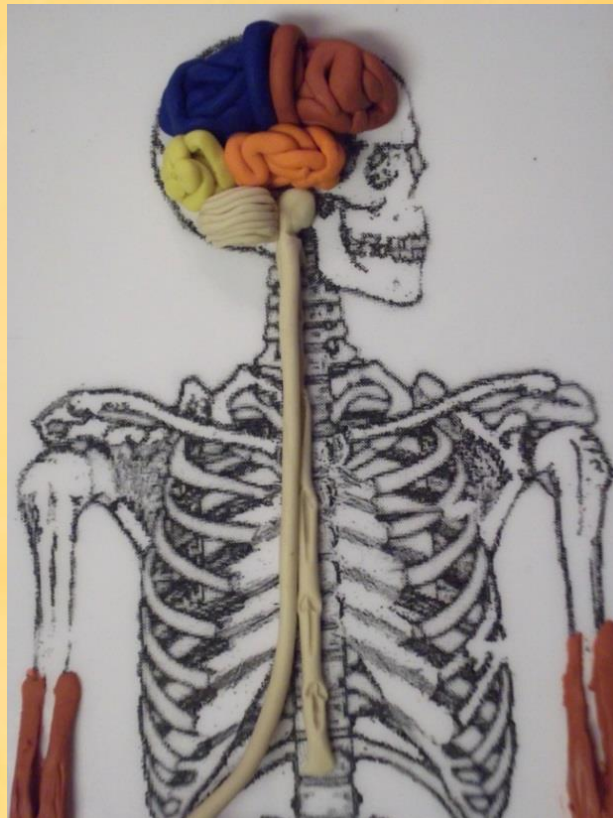


Connect the strand to the base of the medulla oblongata and lay it on top of the vertebrae. Cut the strand at L1 where it anatomically ends.

Place arrows in the clay going up. This represents the sensory tracts on the dorsal side of the spinal cord.



Form another tube of ivory clay about the same diameter as the first tube. Attach it to the medulla oblongata and lay it on top of the sensory tracts.



Add arrows to the top strand pointing down. This strand of clay represents the motor tracts of the spinal cord. These tracts run on the ventral side of the spinal cord.

