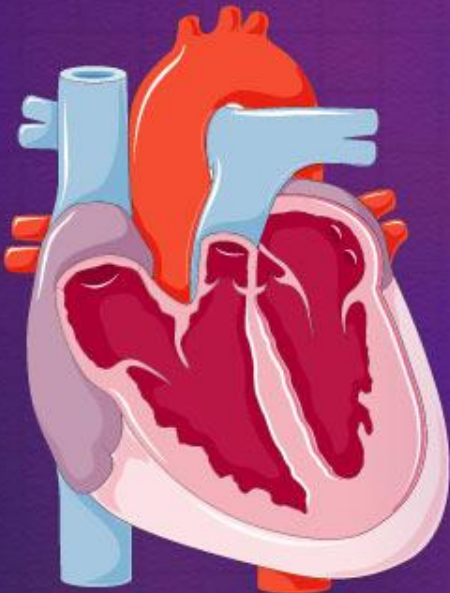


# Clay Anatomy of the Circulatory System – Part 1 The Heart & Aorta

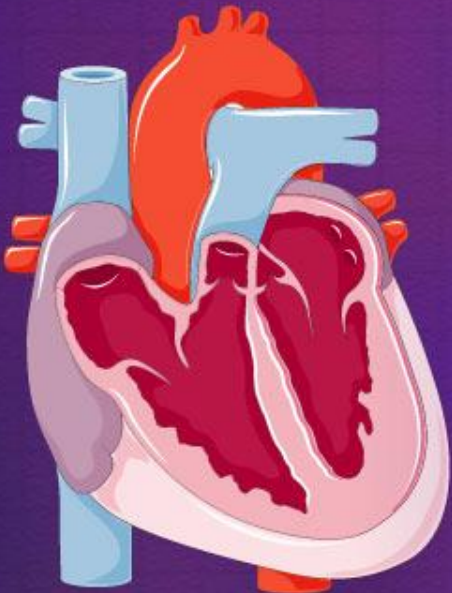
Materials copyrighted and provided by  
Starla's Creative Teaching Tips ©

Hands-On Body Systems  
by Starla A. Ewan

Presentation arranged by  
Lydia Williams

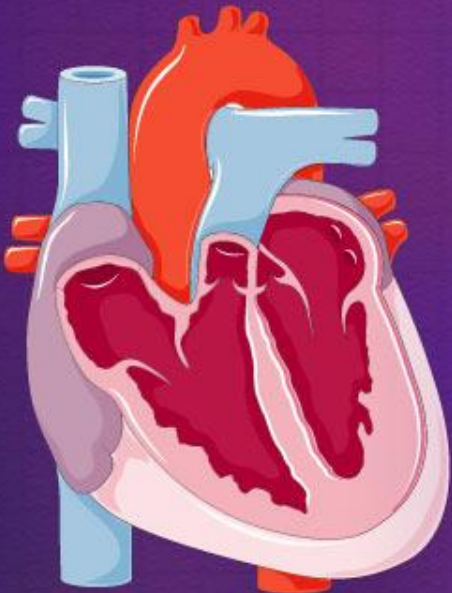


The heart is located lower in the thoracic cage than we think.

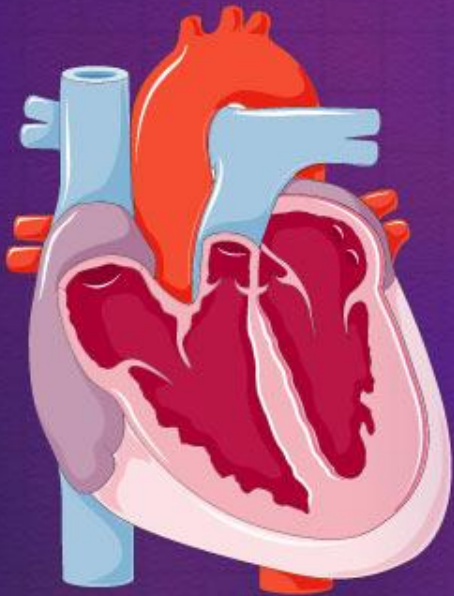


# Building the Heart and Aorta

- Using red, roll a peanut M&M ball, then use the 45 degree technique to turn it into a carrot. Keep the carrot short so it looks like a strawberry.

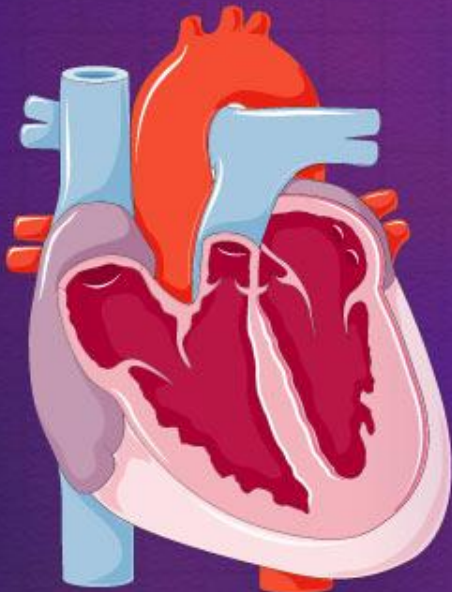


Place it on the card to verify you have created a heart that is the appropriate size.



# Arteries: Arteries Away Always!!

Aorta: form a tube of red clay about the thickness used to form the spinal cord tracks. Attach the tube to the top of the heart. This will be the aorta.



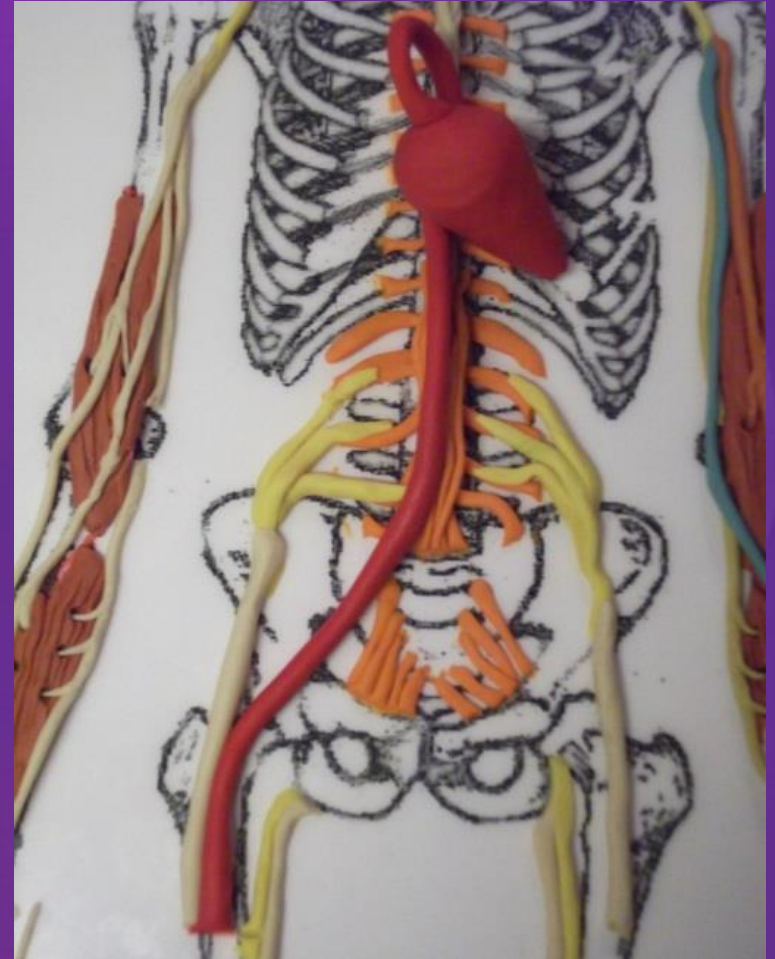
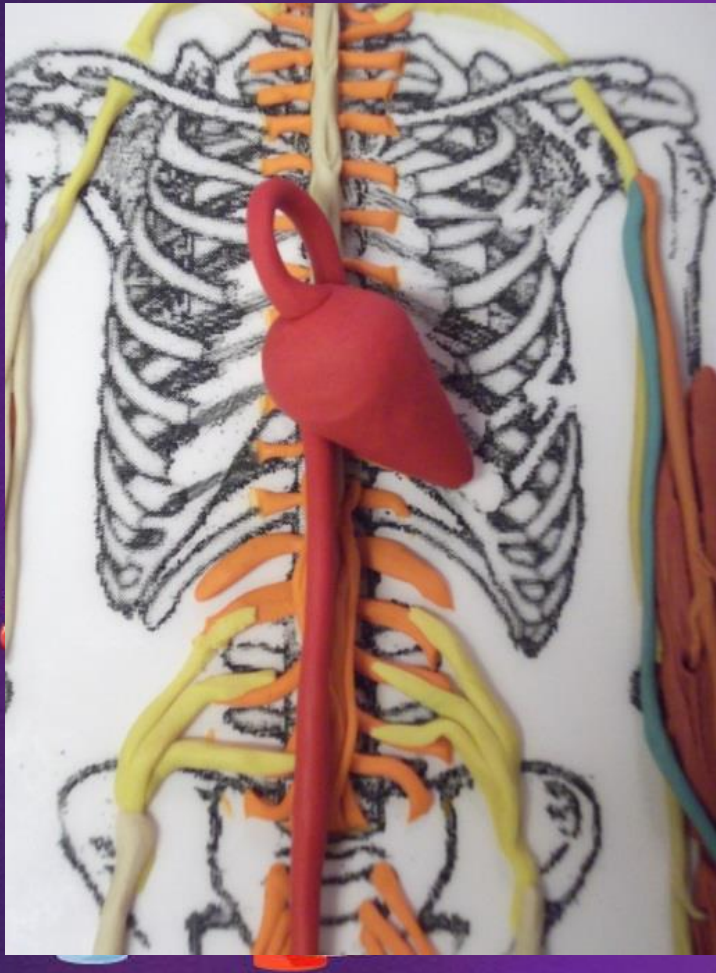
Curve the aorta into an arch and let it fall behind the heart.

The arch feeds the upper body.

The descending aorta feeds the lower body.

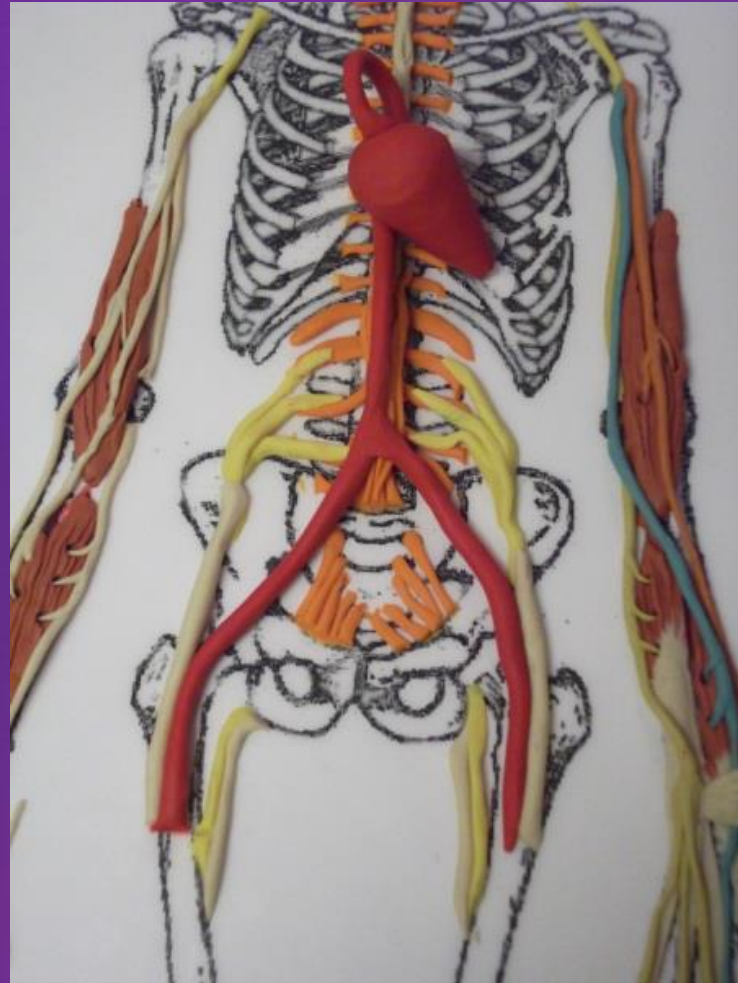
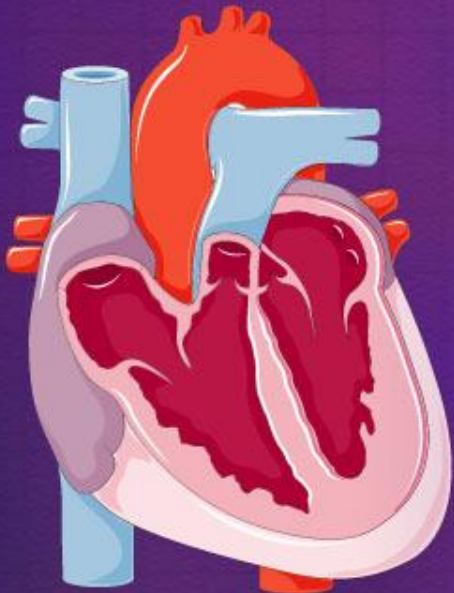


Place the heart and aorta into the thoracic cage on the diagram. Run the aorta down the midline and (if long enough) bring it across to the diagram's right leg.



**Iliac & Femoral Arteries:** Once the artery reaches the top of the femur, it becomes the femoral artery.

Branch another iliac artery to the abdominal aorta (at the umbilical region) and bring it across to the left leg.



You should be able to see through the aorta arch and also see the layering of the spinal cord tracks in relation to the descending aorta.

