

Today's Agenda: 8/26/14

1. Students will highlight in notebook syllabus SC Foundation Standard: 1. 2 Recognize body planes, directional terms, quadrants, and cavities.
2. **Table of Contents Unit 1 - TO: Recognize body planes, directional terms, quadrants, and cavities.**
3. Students will partner together to create body plane rap.



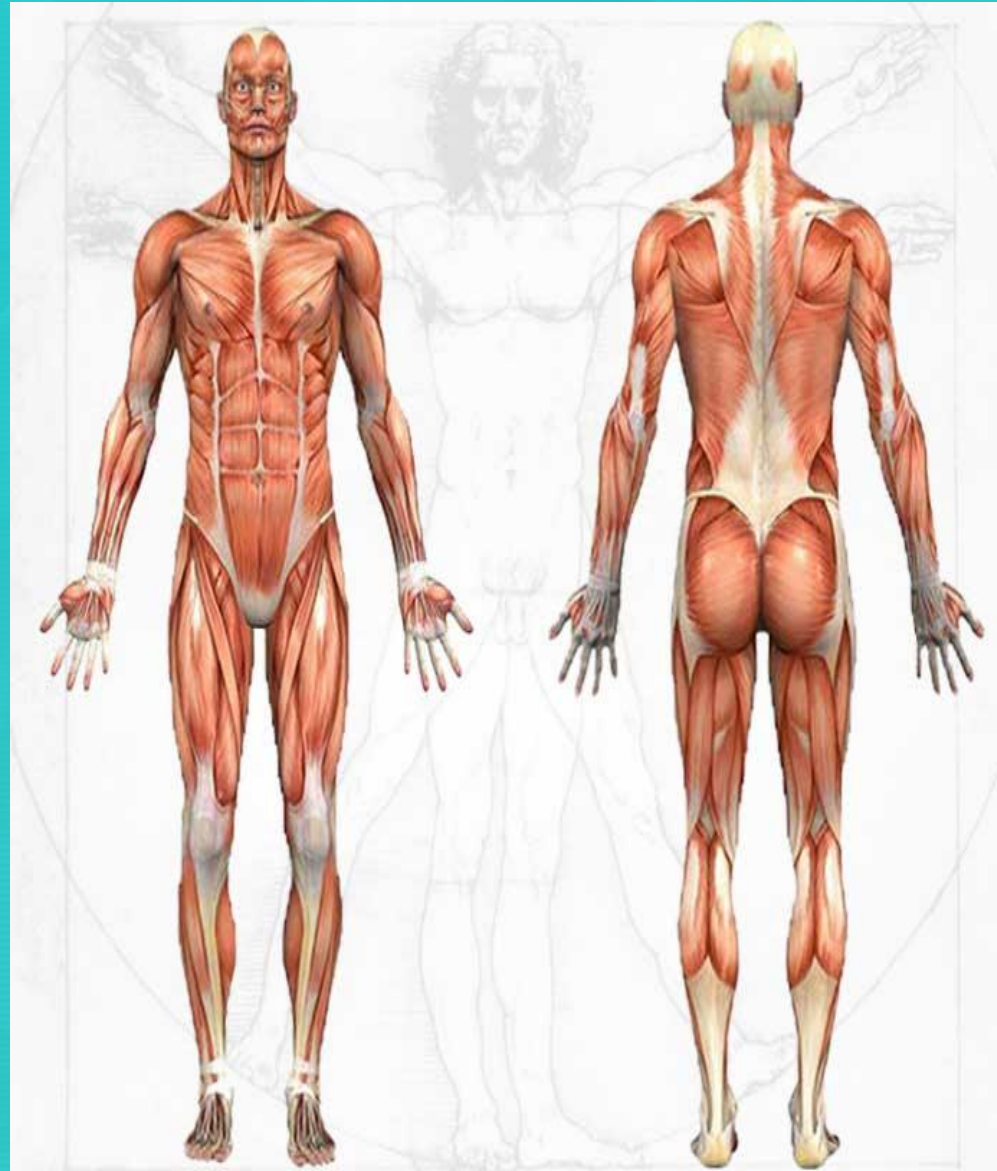
Anatomy vs Physiology

A – study of the structures of the body.

P – study of the functions of these structures; how do they work together.

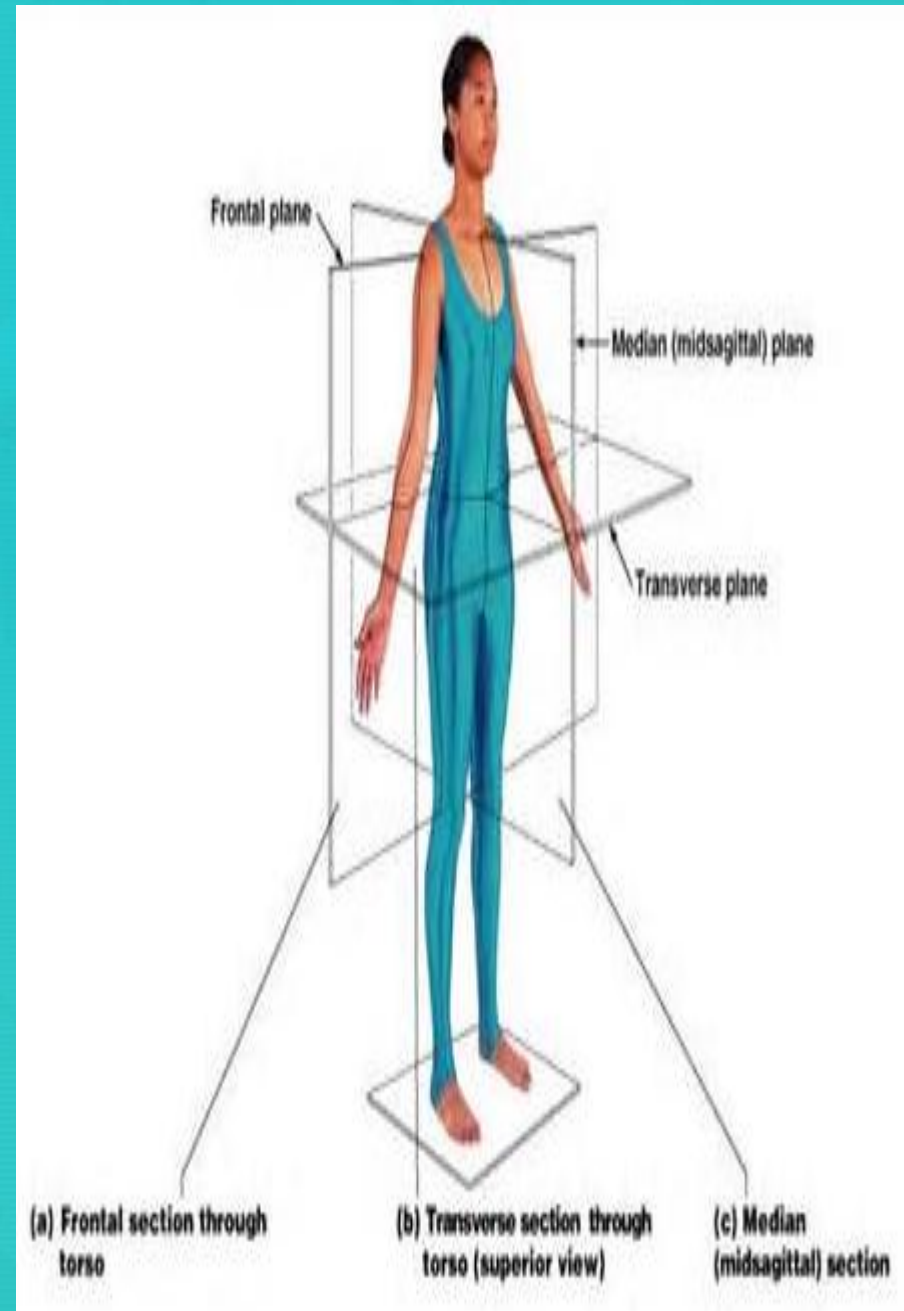
Anatomical Position –

- Standing
- Facing forward
- Arms at side
- Palms towards front



Body Planes

- Body Planes are imaginary lines drawn through the body at various parts to separate the body into sections for descriptive purposes.
- There are **3** main body planes, & various directional terms c/in each.



1. Transverse Plane

Divides body into
upper and lower
portions.

Directional
terms c/in:



Superior

(cephalic)

Towards the
head



Towards
the feet



Inferior

(caudal)



2. Midsagittal Plane

(Median or Sagittal)

Divides body into equal right and left halves.

Directional terms c/in:



Medial

Towards the midline of the body

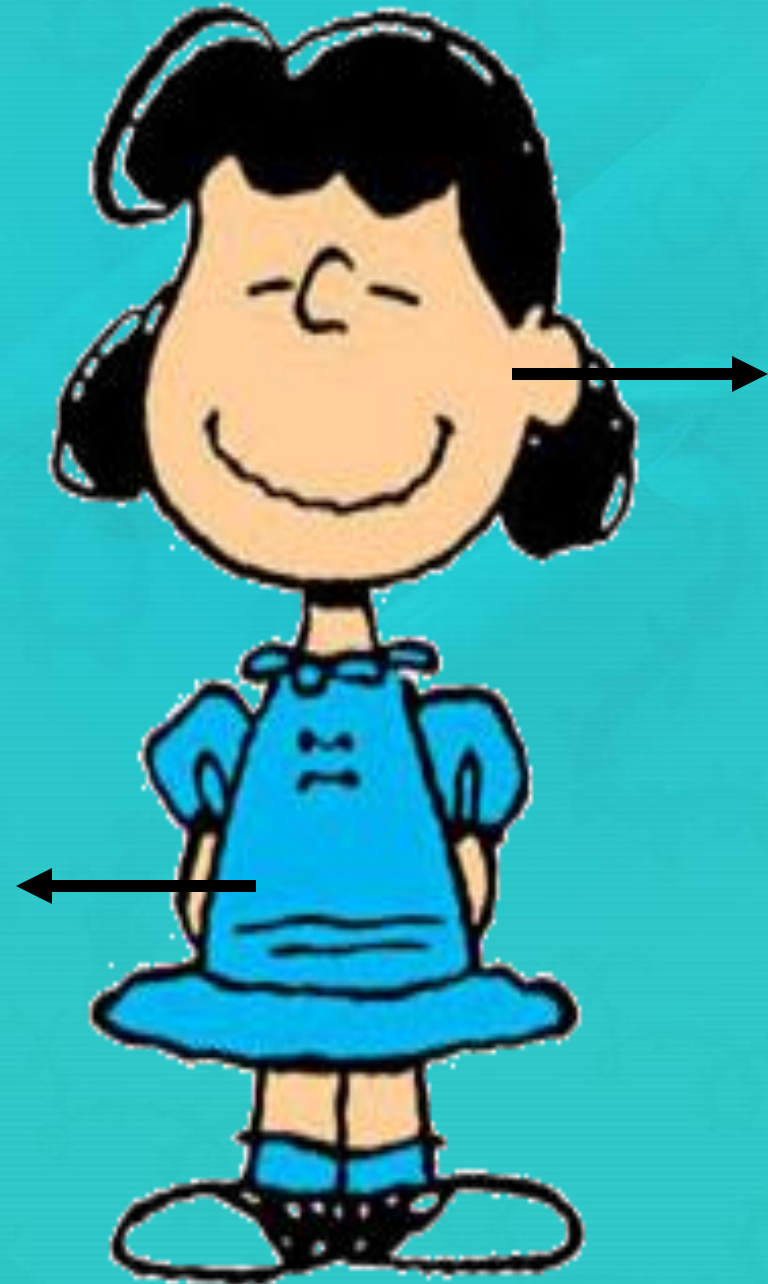


Lateral

Away from the
midline of the body

Bilateral

Relating to two
sides



3. Frontal Plane (Coronal)

Divides body into front
and back portions.

**Directional
terms c/in:**



Anterior (Ventral)

On the front of the body



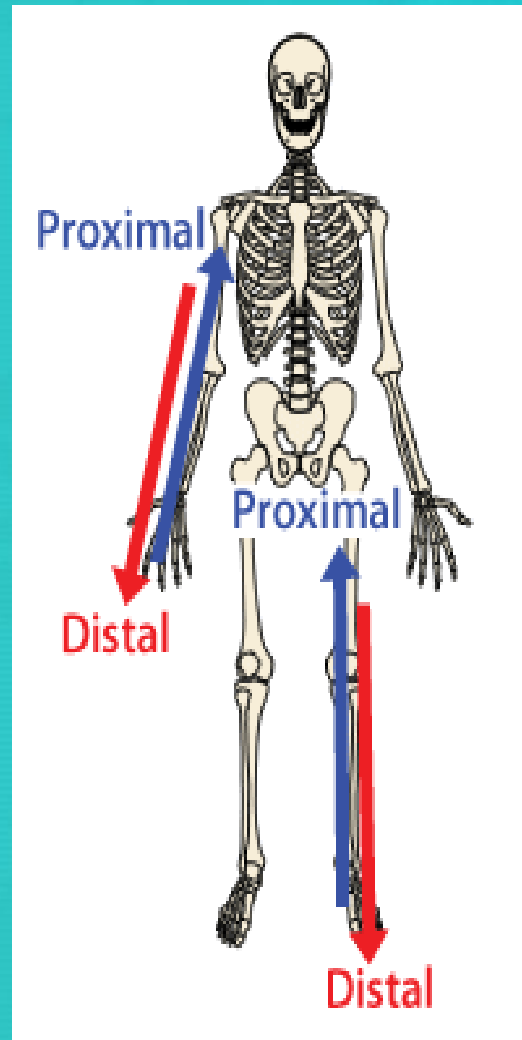
Posterior (Dorsal)

Back part of the body



Proximal

Body parts closer to the body/core

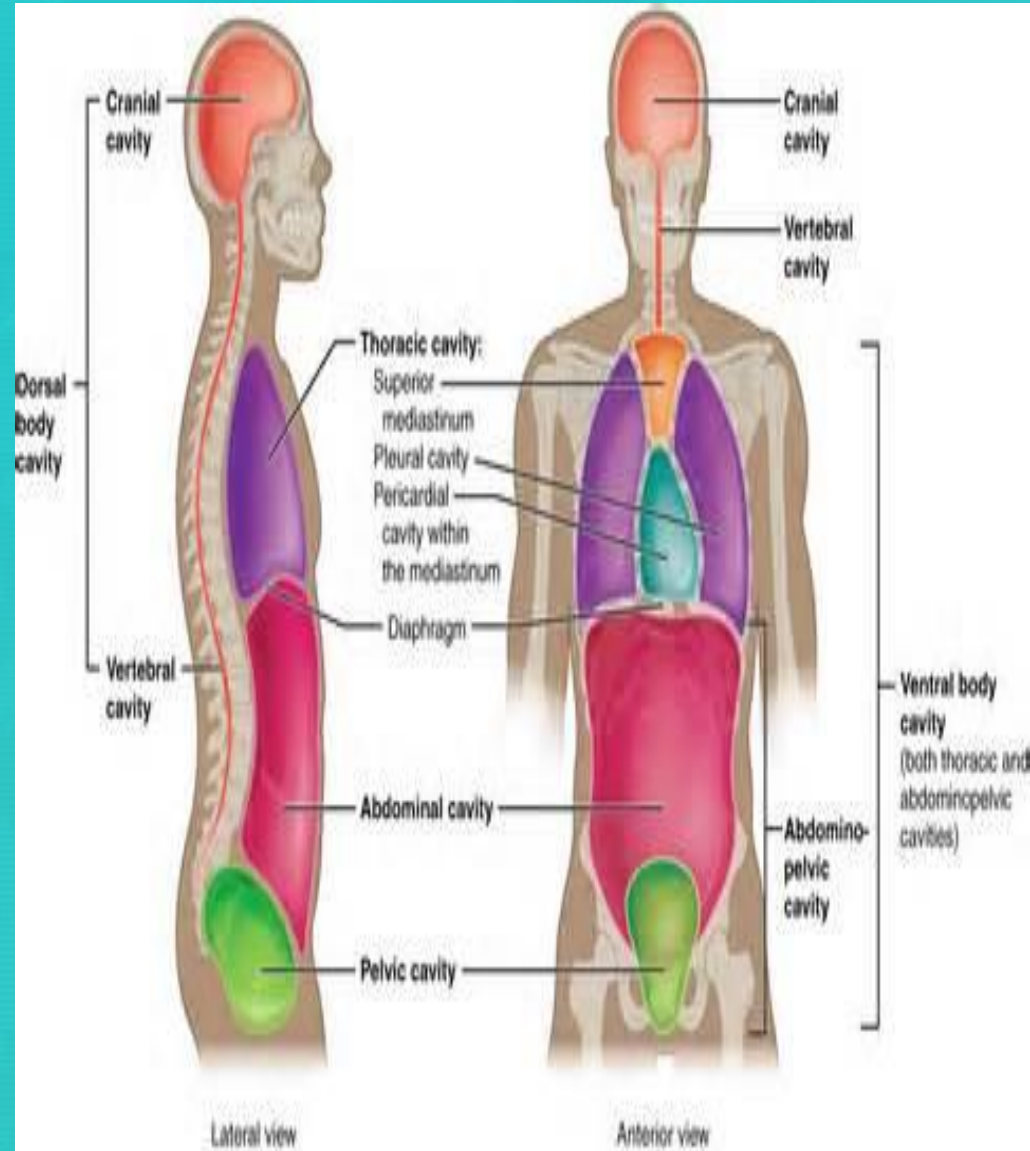


Distal

Body parts more distant to the core.

Body Cavities

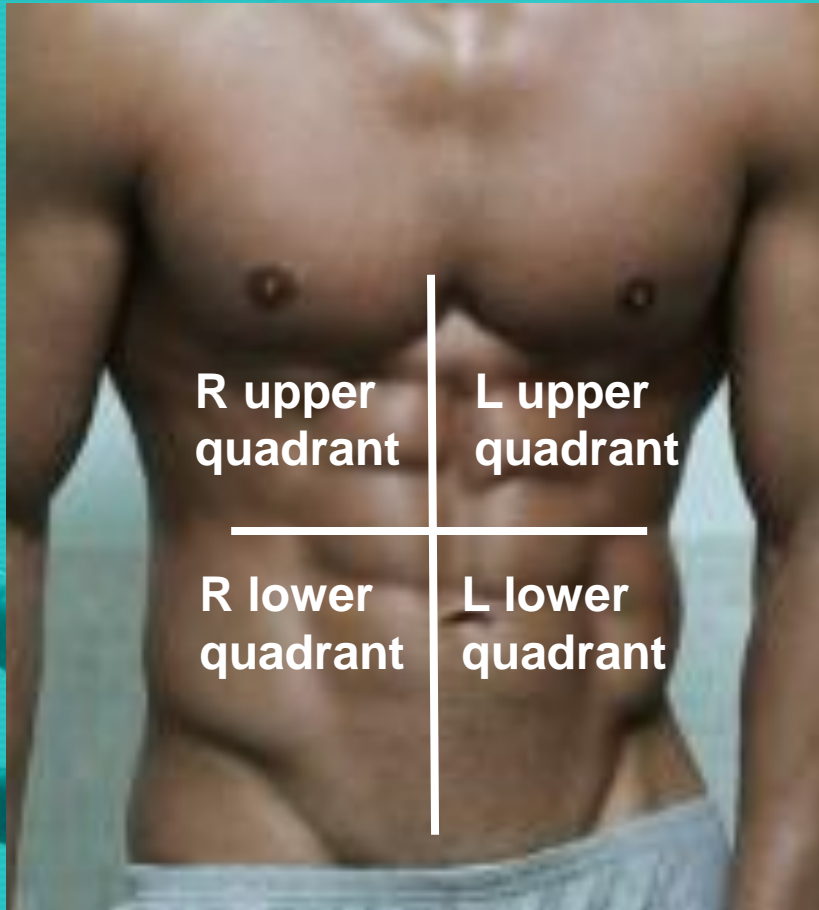
- Spaces c/in the body that contain vital organs.
 - Dorsal has 2:
 - Cranial & Spinal
 - Ventral has 3:
 - Thoracic
 - Abdominal
 - Pelvic
 - Orbital
 - Nasal
 - Buccal



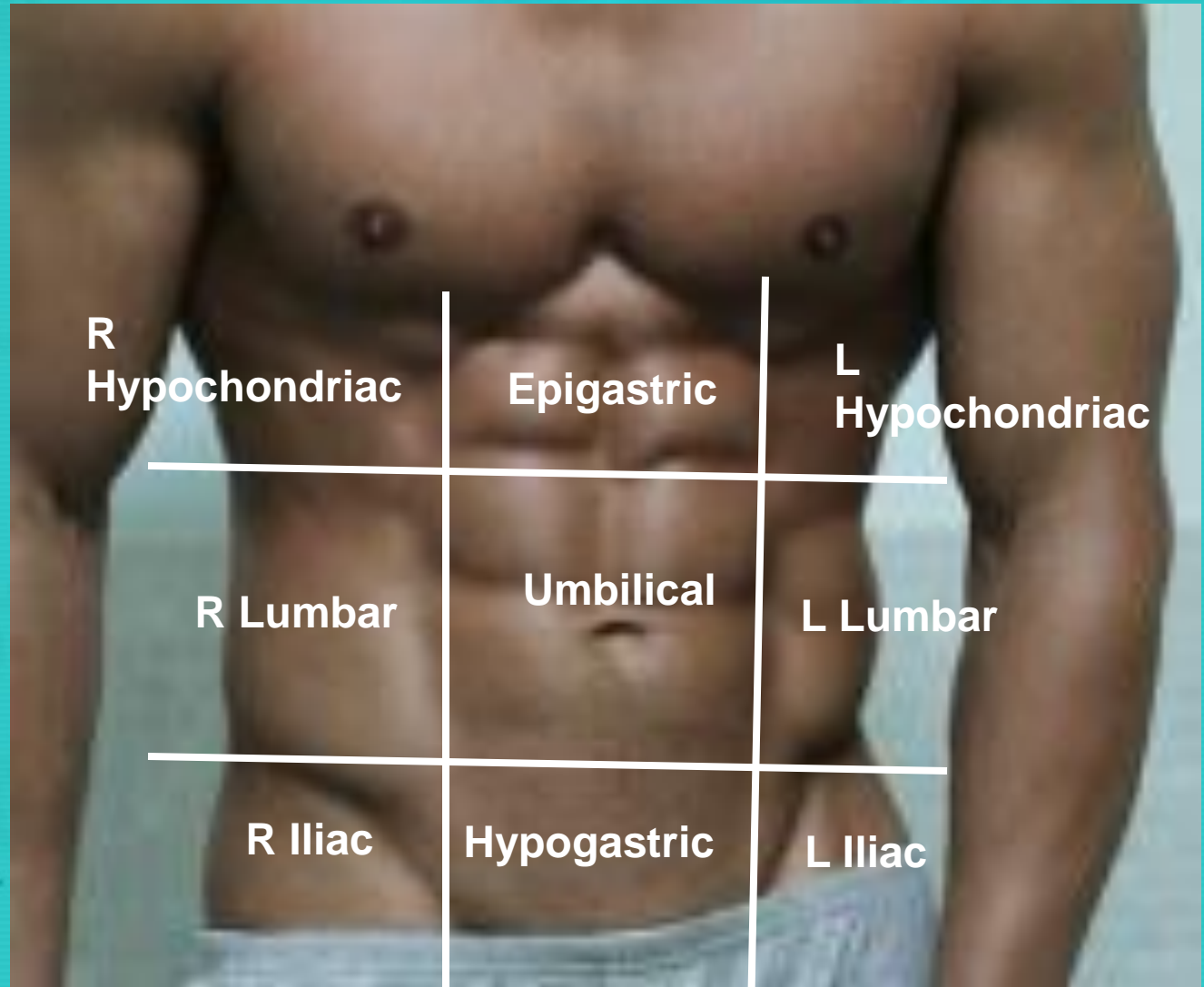
Abdominal Regions help describe where an organ or pain is.

4 Quadrants

9 Regions



9 Regions:



Regions of Abdominal Area

Right
hypochoondriac
region

Left
hypochoondriac
region

Right
lumbar
region

Left
lumbar
region

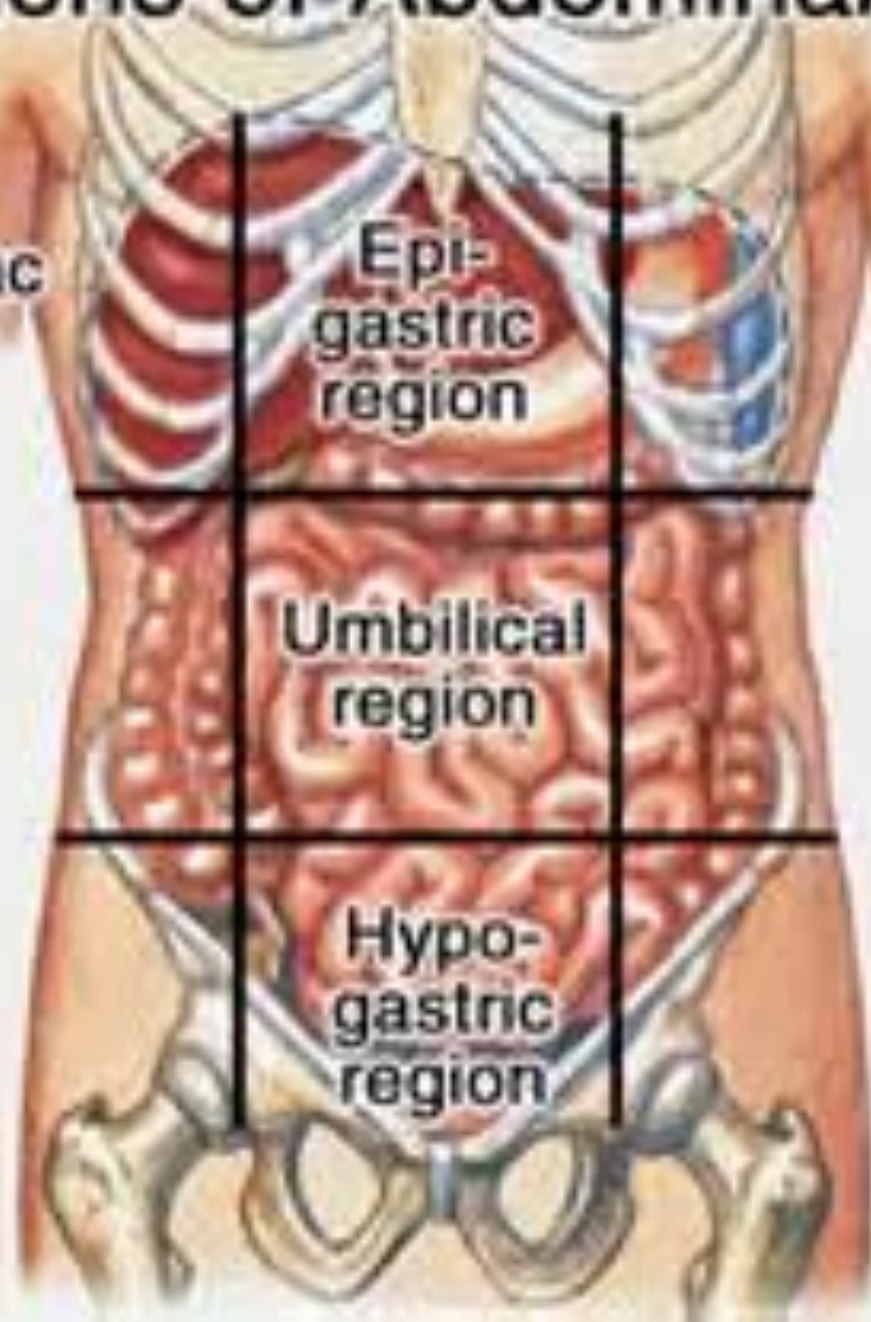
Right
iliac
region

Left
iliac
region

Epi-
gastric
region

Umbilical
region

Hypo-
gastric
region



Laparoscopy

- Visual examination of the interior of the abdomen



Closure:

Match the below terms, write each out completely

1. ___ Superior / Cranial

2. ___ Inferior / Caudal

3. ___ Ventral / Anterior

4. ___ Dorsal / Posterior

5. ___ Proximal

6. ___ Distal

7. ___ Medial

8. ___ Lateral

A. Elbow is to the wrist

B. Arms are to the chest

C. Navel is to the chin

D. Heart is to the arm

E. Head is to the
abdomen

F. Patella is to the thigh

G. Sternum is to the
spine

H. Heart is to the
sternum

